

WELCOME TO THE GESS FAMILY

Principal's Address by
Ms Tan Hwee Pin
Sec 1 Meet-Parent-Session
2025



**To all parents who joined us to break the
Singapore Book of Records, A Big Thank You**



OUR PROUD HISTORY



1885

**Founded by
Mr Gan Eng Seng**

Started by a philanthropist who wanted to provide a bilingual education for boys who were poor.



PRE-WAR

**Supported by
Board of Trustees**

Operated as a free school with English and Chinese education. Became a government school in 1938.



POST WAR

**Headed by
Mr P F Aroozoo**

Re-opened in 1945 after World War II. New building in Anson Road in 1951.



PRESENT

Well-known for its brand of education that focuses on the holistic development of students

140 years of growing Gessians of Excellence, Standing and Significance



Vice-Principals



Mrs Selva



Mr Glynn Tan



Mr Goh Thye Heng





Sec 1 Year Head Mr Clarence Loh



Sec 1 Gatekeepers

Mrs Tan-Ong Li Pei
HOD / Mathematics



Mdm Goh Yuh Mein
HOD / Science



Mdm Leong Pui Wan
**HOD / Character & Citizenship Education
(CCE)**





Mr Teo Kok Keong
HOD/Student Management



Mr Tan Yong Geng
SH/Student Management
(covering)



Mr Sim Kwang Mong
Senior School Counsellor



Mrs Yap Hwee Ting
SENO



Form Teachers

Get to know them after hall segment



VISION

Gessians of
Excellence
Standing &
Significance





**SEC 1 ORIENTATION CAMP
8 - 9 JANUARY 2025**

MISSION



**Nurturing the best in each
& Striving ever onward**



VALUES

Integrity

Compassion

Resilience

Discipline

Respect





MOTTO

ONWARD



Full Subject- Based Banding



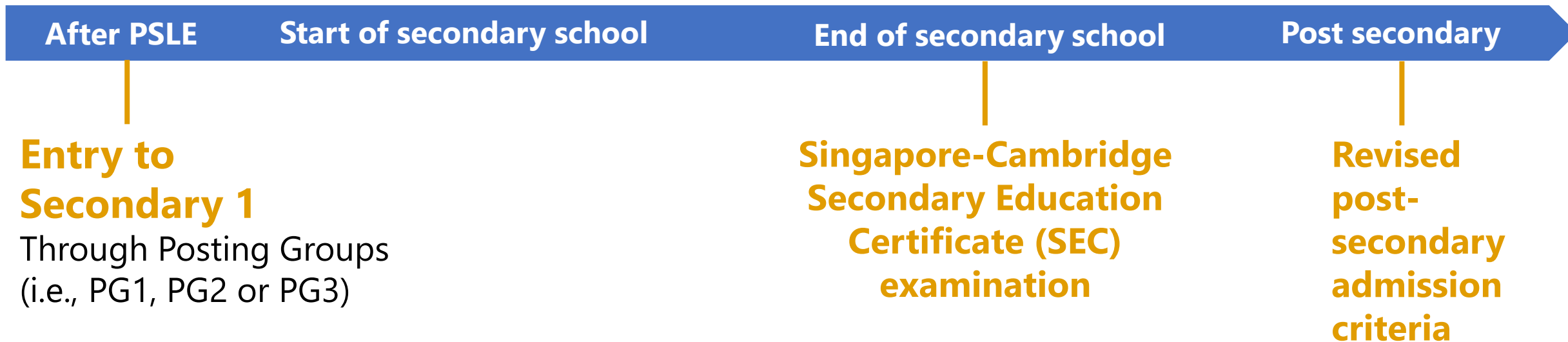
What is Full Subject-Based Banding?

- Full Subject-Based Banding (Full SBB) is part of MOE's ongoing efforts to **nurture the joy of learning** and **develop multiple pathways** to cater to the different strengths and interests of our students.
- With Full SBB, we are moving towards a secondary school education where **students learn each subject at the level that best caters to their overall strengths, interests and learning needs.**

Secondary school experience under Full SBB

Secondary school experience

1. Mixed form classes upon entering secondary school
2. Common curriculum subjects at lower secondary
3. Subjects to be offered at G1, G2 or G3, mapped from the standards of the N(T), N(A) and Express subject levels respectively
4. Greater flexibility to offer subjects at various subject levels
5. Shift away from stream-based subject offerings



Assessment Weightage For 2025

Level/Term	Term 1	Term 2	Term 3	Term 4
Sec 1	WA 1 (10%)	WA2 (15%)	WA3 (15%)	End-of-Year Exam (60%)

For more information on topics and skills tested, please visit our school website:

<https://www.ganengsengsch.moe.edu.sg/weighted-assessment/>

Alternative Assessments (AA)

Alternative Assessments are a range of assessments besides the traditional pen and paper tests. They include authentic assessments that tap on real world situations and problems or performance tasks.



School Routines

Activities	Monday	Tuesday	Wednesday	Thursday	Friday
Reporting Time	7.40 am	7.30 am	7.30 am	7.30 am	7.30 am
Reading	EL Books	EL Books	EL Books	EL Books/ Aroozoo Reads	MTL Books
Others	School Song & Creed Take 5 Affirmation Day	-	Hi 5	-	-

We value punctuality in our students. Late-comers will have to serve detention.



Transition Phase

New and Exciting Phase of Secondary School Experience

For Students :

- Long days
- Many subjects
- New classmates
- Full Subject-Based Banding
- New CCAs/
Instructors/coaches
- New Teachers
- New environment



**BIG CHANGES
ARE COMING**

For Parents :

- Busier Days
- New Relationships
- New ways of communications

How can school and parents ease Sec 1 students into Secondary School Life?

Gan Eng Seng School

Structures in Place

- Student Development Team

Right People in Place

- Instructional Programme Heads
- Non-Instructional Programme Heads
- Year Heads
- Gate Keepers
- Form Teachers
- Student Leaders

Caring Culture & Good Discipline Tone



Channels of
Communication
(Reaching out to
school)

- Parents Gateway
- Term Letter to parents
- Email addresses of staff on school website
- General Office telephone line
- School website

For more...



<https://www.instagram.com/theofficialgess/>

GESS Instagram



<https://www.facebook.com/SG.GESS/>

GESS Facebook

CONTACT US



a) Email addresses of the staff can be found on the school website:

<https://www.ganengsengsch.moe.edu.sg/about-us/Our-Staff/key-personnel-and-form-teachers/>

b) Generic Email Address: gess@moe.edu.sg

c) Office Telephone: 64745594

Parent Communication



Teachers

- Contactable during office hours on weekdays
- Will reply within 3 working days

School

- Contactable through website

www.ganengsengsch.moe.edu.sg

- Telephone : 64745594

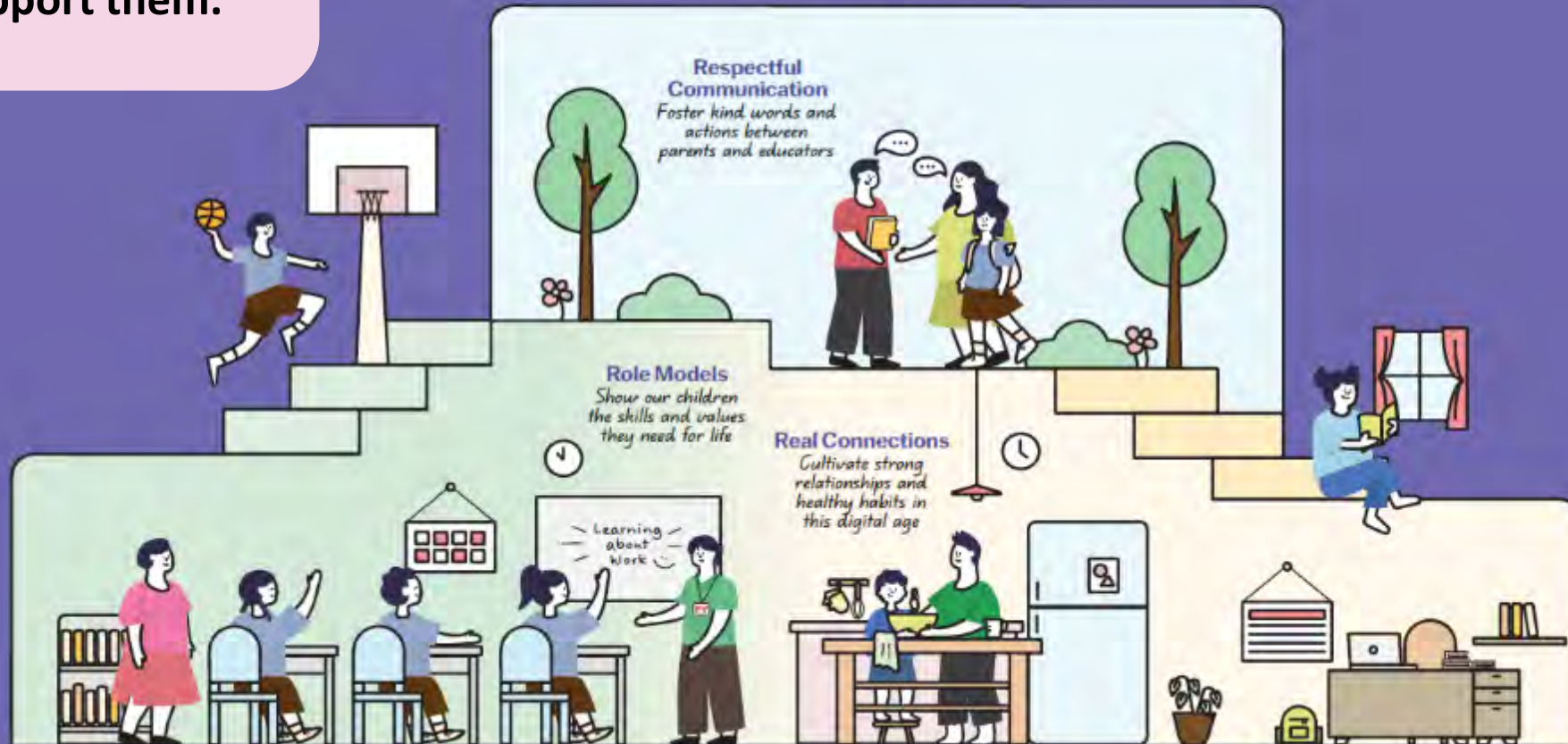
Will reply within 3 working days

School-Home Partnership

Our children do best when schools and parents work hand in hand to support them.

Guidelines for School-Home Partnership

Raising a Happy, Confident, and Kind Generation Together



3 areas we can work together on to foster School-Home Partnership

1 Respectful Communication

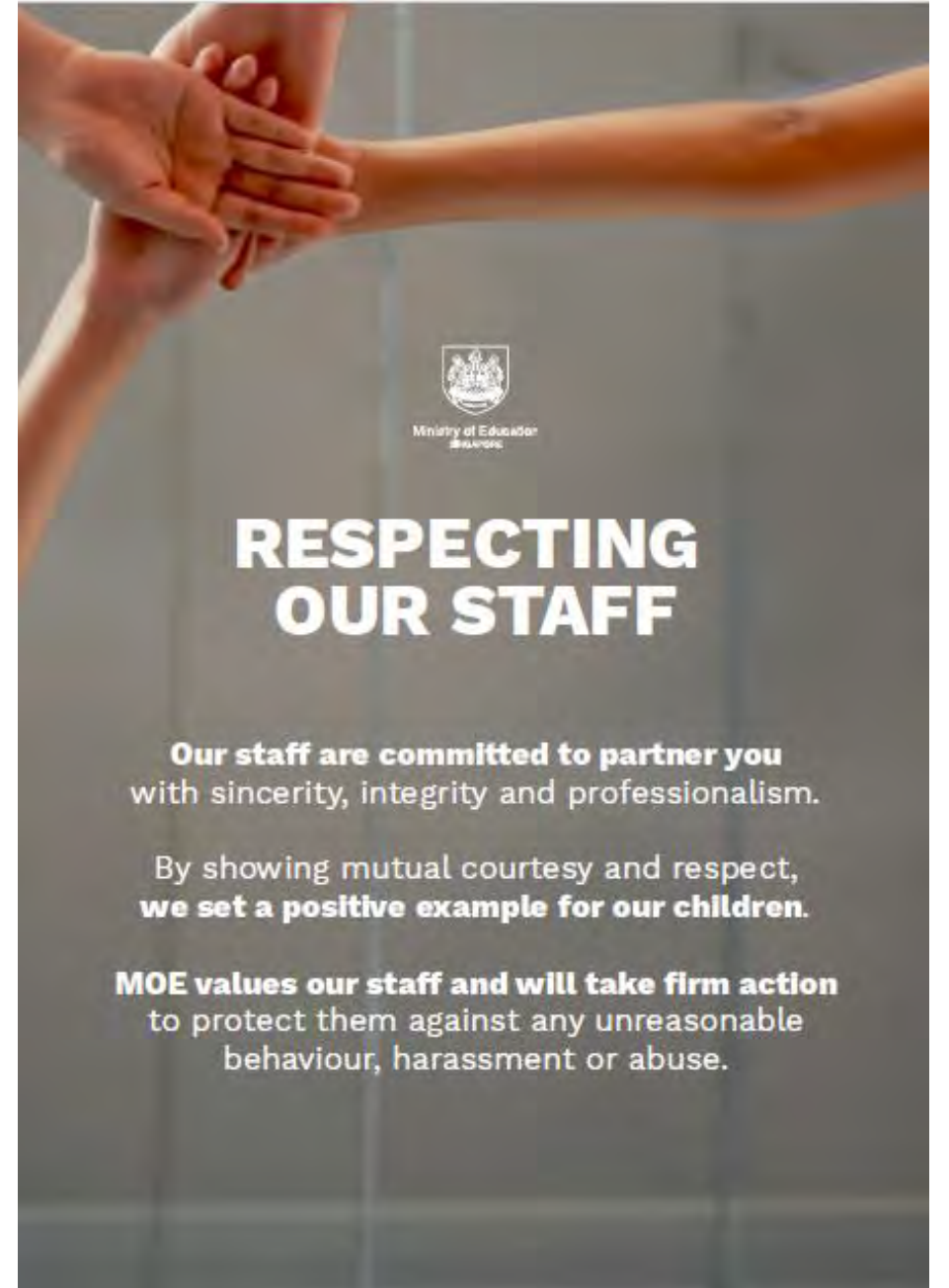
2 Role Models

3 Real Connections



Engagement Charter

- The partnership between schools and parents is an essential one.
- By promoting mutual courtesy and respect in our interactions with each other, we can be good role models for our children and build authentic partnerships that will better benefit our children.



Respectful Communication

**Foster kind words and actions
between schools and educators**



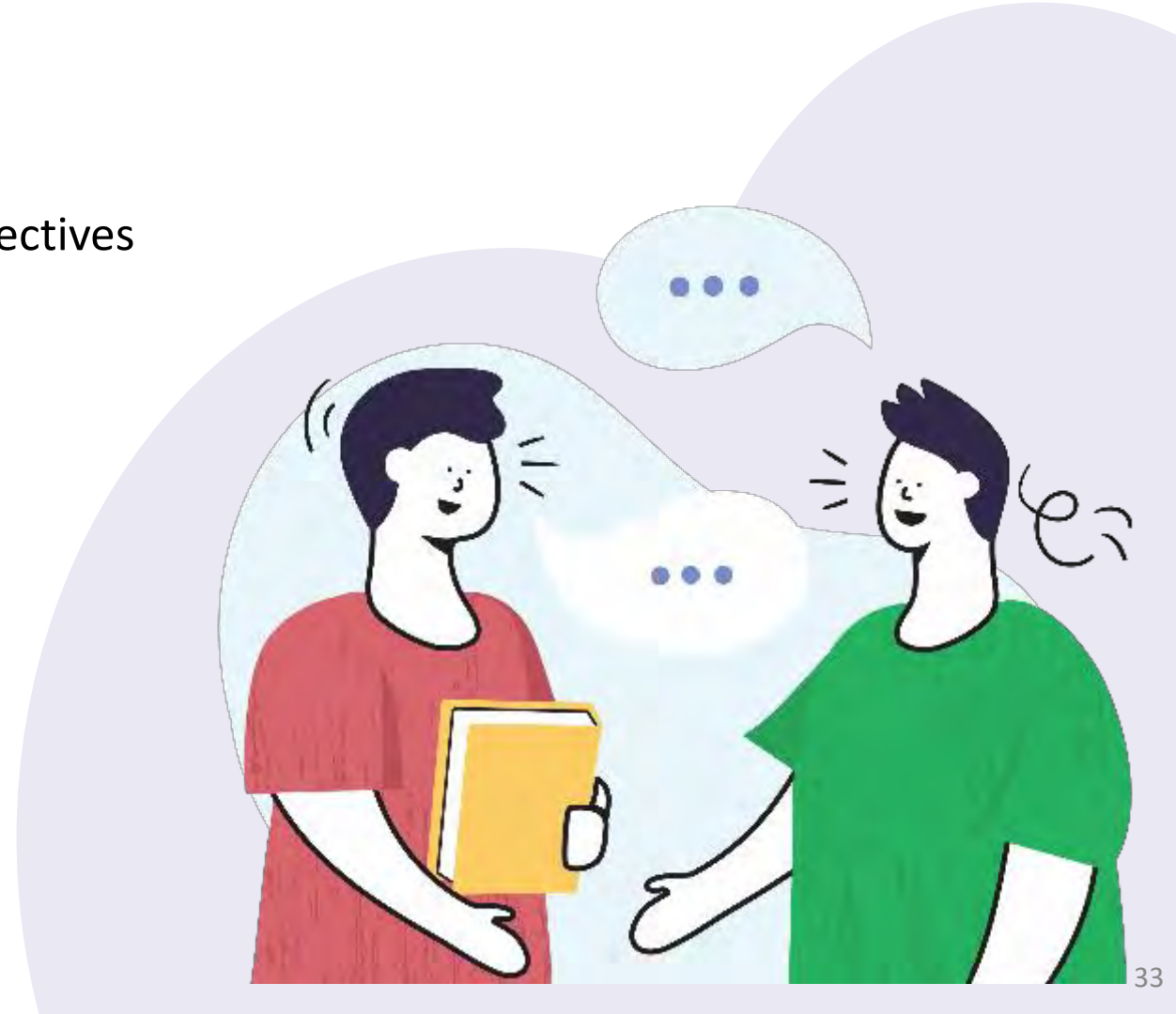
Listen to and understand each other's perspectives and concerns regarding each child



Communicate kindly using official channels. Teachers are not required to share their personal mobile numbers



Respect each other's time by communicating during working hours



Role Models

Show our children the skills and values they need for life



Find joy in everyday experiences with our children



Instill confidence by encouraging responsibility and believing in our children's abilities



Model good values in words and actions



Check out this video on MOE YouTube for tips on how parents can support the social-emotional learning of their children.

Real Connections

Cultivate strong relationships and healthy habits in this digital age

Establish good habits for our children to stay confident and in control of their technology use



Provide a balanced mix of engaging online and offline activities, at school and at home

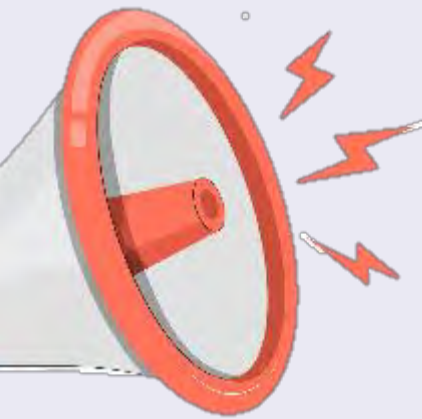
Build strong bonds through shared experiences and meaningful conversations

An infographic titled "Helping Your Child Build Healthy Relationships" from the "Building Relationships" section. It includes a QR code, an illustration of a family, and text explaining that healthy relationships contribute to a child's well-being. It lists "Things You Can Do" such as exposing children to social situations, encouraging them to make friends, and listening to their problems. It also includes "Things You Can Say" with prompts like "When you see your friend struggling, put yourself in their shoes..." and "Older children are often figuring out the balance between being themselves and fitting in with others..."

An infographic titled "Helping Your Child Thrive in the Online Space" from the "Navigating the Digital Age" section. It includes a QR code, an illustration of a laptop with a shield, and text explaining the importance of helping children understand different viewpoints. It lists "Things You Can Do" such as encouraging an open mind, practicing empathy, and considering the issue from another perspective by applying the S.U.R.E. acronym (Source, Understand, Research, and Evaluate).



Check Parenting for Wellness Toolbox for conversation starters to facilitate meaningful conversations, and practical strategies on parenting in a digital age.



Join Us! PARENT-TEACHER ASSOCIATION

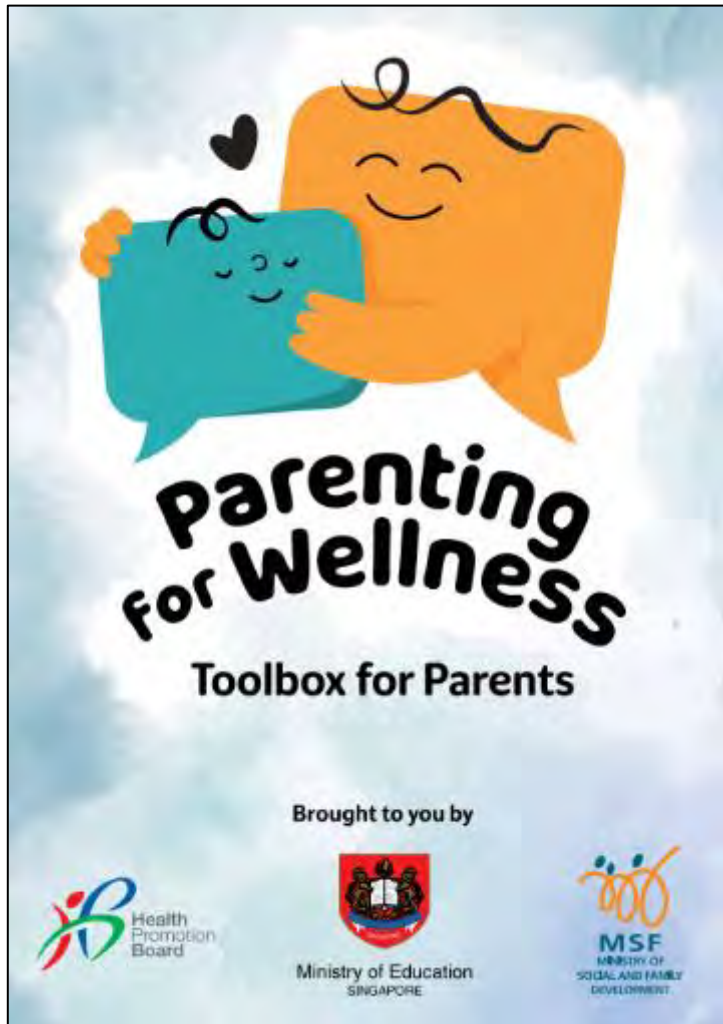
A team of dedicated parents supporting each other in nurturing their children. Network, share and learn with fellow parents by involving yourself in initiatives such as Parenting Workshops and Career Talks.



Please scan the QR code to indicate your interest.



Latest Resource: Parenting for Wellness Toolbox



An initiative to empower parents with key knowledge and skills to build strong parent-child relationships, strengthen their children's mental well-being and resilience, and parent effectively in the digital age.

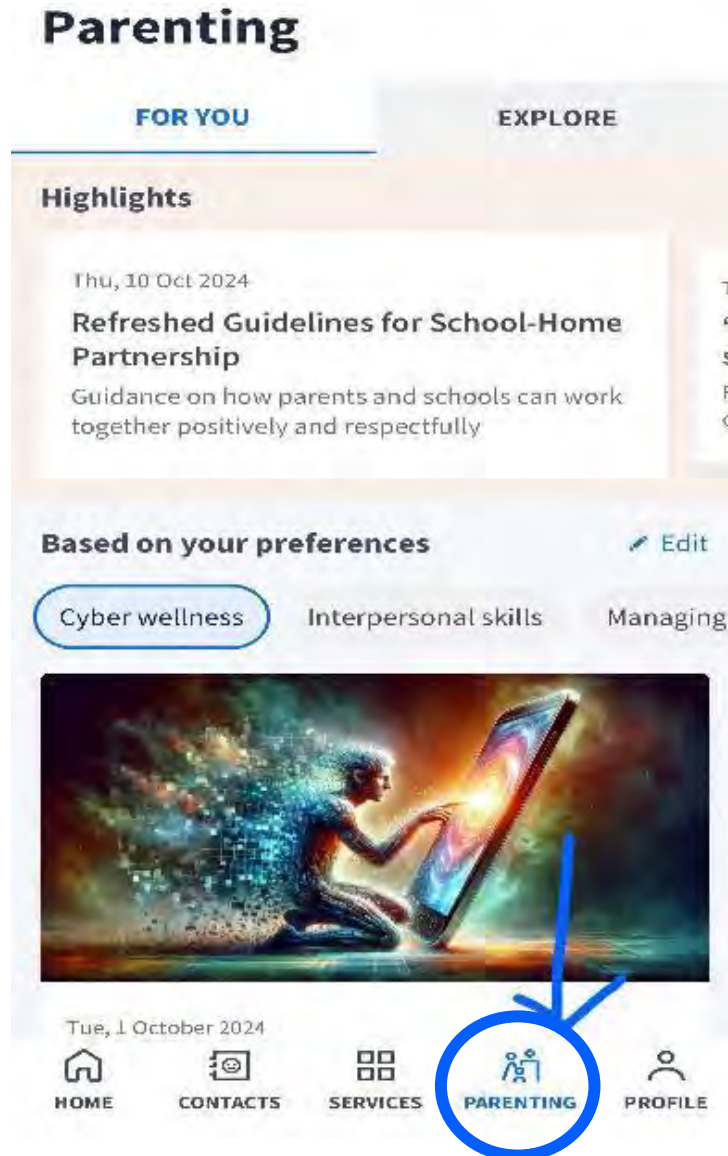
The Toolbox for Parents **comprises bite-sized practical tips and strategies for parents**, such as ways to create a safe and nurturing home environment, build resilience in children, and stay safe online.



Check out Parenting Resources on Parents Gateway (PG)

Repository of parenting resources

A repository for parents to browse resources on topics such as forging parent-child relationships and education pathways.



Find out more about Parents Gateway here.

Check out more resources from MOE

Parent Kit



Parent Kit

www.moe.gov.sg/parentkit

Each Parent Kit issue contains bite-sized actionable tips with supporting resources for parents to help them support their child in their education journey.

MOE Social Media Platforms



www.instagram.com/parentingwith.moesg



www.facebook.com/moesingapore



www.instagram.com/moesingapore



www.youtube.com/moespore

As many hands build
a house,
so many hearts make
a school.

