

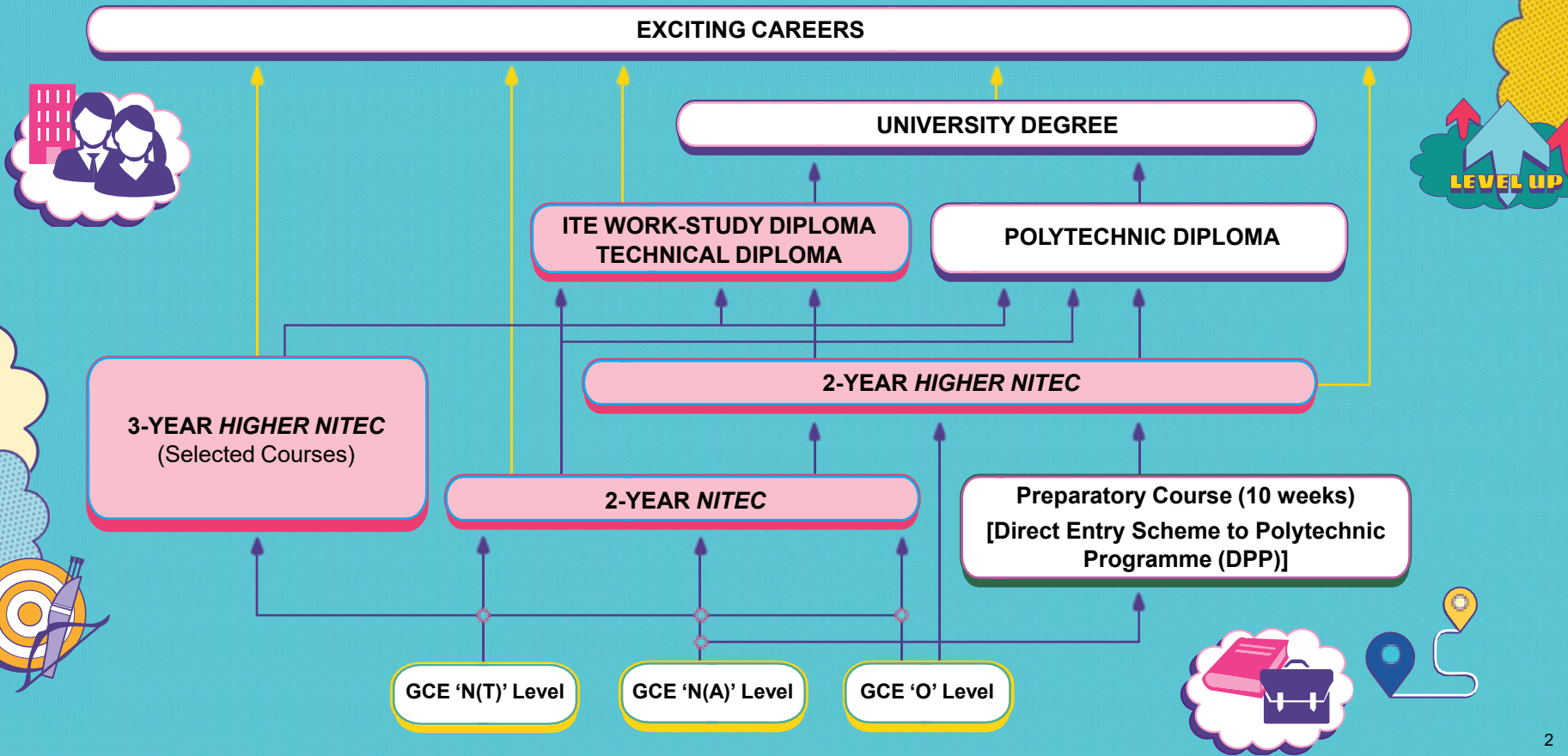


# THE FUTURE STARTS FROM WITHIN

Course Booklet 2022



# PROGRESSION PATHWAYS



# NEW 3-YEAR *HIGHER NITEC*

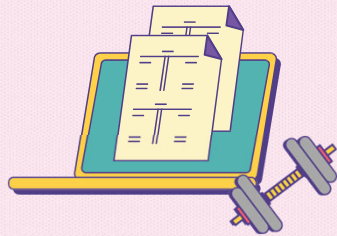
ITE will introduce a **new 3-year *Higher Nitec* full-time programme** from Academic Year 2022. Streamlining the current *Nitec* and *Higher Nitec* curricula, this new option will allow students to attain a ***Higher Nitec* qualification directly, in only three years instead of the current four years.**

**Normal (Academic) and Normal (Technical) students can apply** for this new 3-year *Higher Nitec* programme using the existing *Nitec* entry requirements.

**O-Level and Direct Entry Scheme to Polytechnic Programme (DPP) Normal (Academic) students will join the programme directly in the second year and will continue to attain their *Higher Nitec* in 2 years.** ITE will adopt a phased implementation approach beginning with eight *Higher Nitec* courses in Academic Year (AY) 2022.

## School of Business & Services

- *Higher Nitec* in Accounting
- *Higher Nitec* in Sport Management

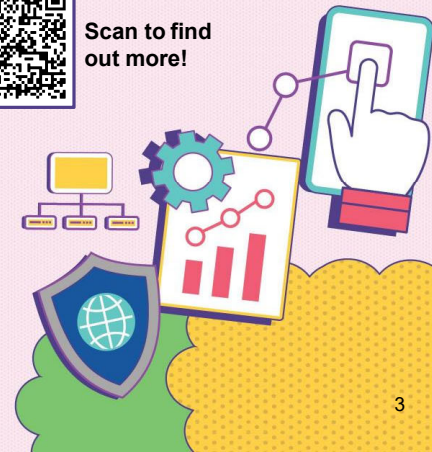


## School of Electronics & Info-comm Technology

- *Higher Nitec* in Electronics Engineering
- *Higher Nitec* in Security System Integration
- *Higher Nitec* in IT Systems & Networks
- *Higher Nitec* in Cyber & Network Security
- *Higher Nitec* in Business Information Systems
- *Higher Nitec* in IT Applications Development



Scan to find out more!

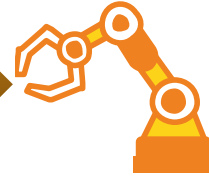


# EARLY ADMISSIONS EXERCISE (EAE)

Secure a Place at ITE before your GCE 'N' or 'O' Levels, through your Interests and Aptitude.

01

Apply for a Course based on your Aptitude and Interests, not on your Prelim results



02

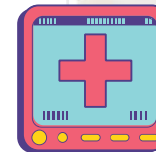
Attend an Interview/Aptitude tests, if selected

03

Receive a Conditional Offer for Admission to ITE before your GCE 'N' level exams

04

Meet the Minimum Entry Requirements of the Course and you can join ITE



Scan to view the ITE EAE video

# WHAT TO PREPARE

---



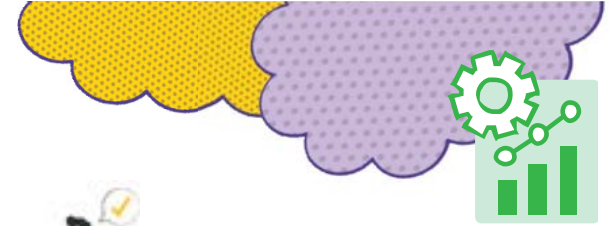
## Submit Your Application Online

### 1. 100-word write up

- Describe your passion, talents, skills or achievements which are relevant to the *Nitec* course. (You can apply up to 3 *Nitec* courses)

### 2. Provide relevant supporting documents

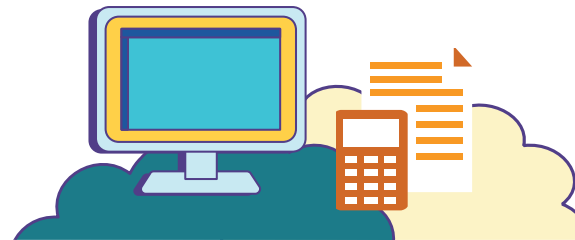
- Certificates of Achievements
- Testimonials (work)
- Portfolios (if any)
- CCA records
- Others



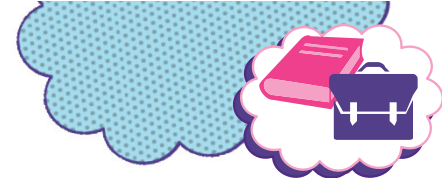
## And if you have been shortlisted... Excel in Your Interview/Aptitude Test

### Be prepared

- Bring along your supporting documents
- Demonstrate your understanding of the course and industry
- Share your passion and interests related to the course



# EAE APPLICATION PROCESS



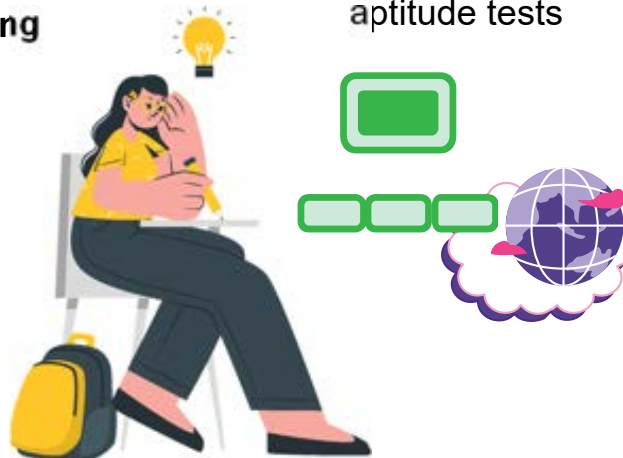
**Application**  
(26 May to 1 Jun 2022)

Submit your EAE application online  
(Write up + Supporting documents)



**Selection & Interview**  
(Jun to Jul 2022)

Shortlisted applicants will have to undergo interviews and/or aptitude tests



**Offer & Acceptance**  
(Aug 2022)

- Conditional offer will given to successful applicants.
- Applicants are required to **accept** the offer within a specified period
- Successful applicants will get a place in ITE as long as they meet the **minimum entry requirements** of the course in their N-level results



# DIRECT ENTRY SCHEME TO POLYTECHNIC PROGRAMME (DPP)



Get a guaranteed\* place at the Polytechnic under ITE's Direct Entry Scheme to Polytechnic Programme (DPP)

\*Admission to DPP is based on merit.

## Benefits of DPP

01

Get **direct progression** from a ITE *Higher Nitec* course to a related Polytechnic Diploma course

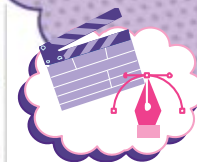
02

Master a **strong foundation in technical education** and have an edge over the fresh GCE 'O' level graduates at the polytechnics

03

Skip the uncertainty of taking the GCE 'O' levels and save one year

<b>Higher Nitec Courses</b>	<b>Progress to 1st Year in relevant Polytechnic Diploma Course*</b>	<b>Progress to 2nd Year in relevant Polytechnic Diploma course*</b>
Applied Sciences#	ITE raw GPA $\geq$ <b><u>2.5 points</u></b> (excluding CCA bonus points^)	N.A.
Engineering and Info-Communications Technology#	ITE raw GPA $\geq$ <b><u>2.5 points</u></b> (excluding CCA bonus points^)	ITE raw GPA $\geq$ <b><u>3.5 points</u></b> (excluding CCA bonus points^)
Business & Services	ITE raw GPA $\geq$ <b><u>3.0 points</u></b> (excluding CCA bonus points^)	N.A.





# DIRECT ENTRY SCHEME TO POLYTECHNIC PROGRAMME (DPP)

## Applied Sciences / Engineering / Info-Communications Technology

### Minimum Entry Requirements

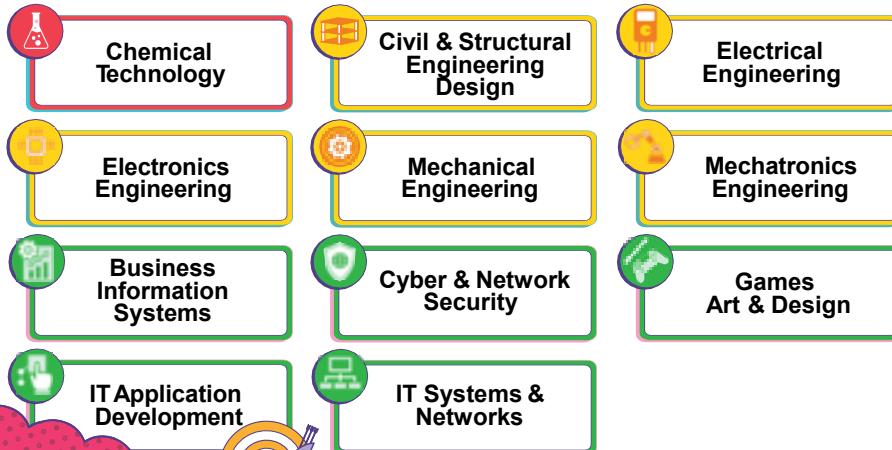
Grades 1 - 4 in English Language  
Grades 1 - 4 in Mathematics  
Grades 1 - 5 in three other subjects

## Business & Services

### Minimum Entry Requirements

Grade 1–3 in English Language  
Grade 1–4 in Mathematics  
Grade 1–5 in three other subjects

**You need English + Maths + 3 Best Subjects  $\leq$  19 points**



Chemical Technology

Civil & Structural Engineering Design

Electrical Engineering

Electronics Engineering

Mechanical Engineering

Mechatronics Engineering

Business Information Systems

Cyber & Network Security

Games Art & Design

IT Application Development

IT Systems & Networks



Accounting

Event Management

Financial Services

Hospitality Operations

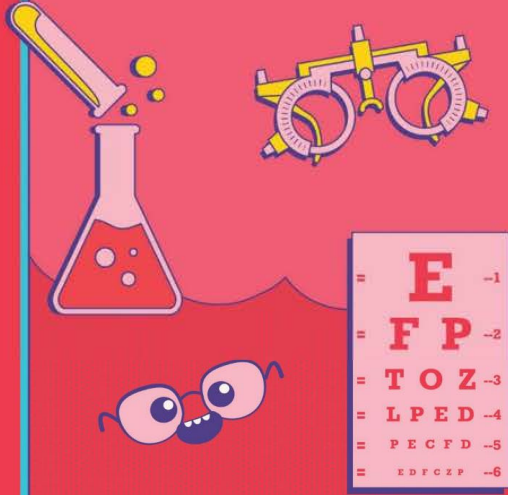
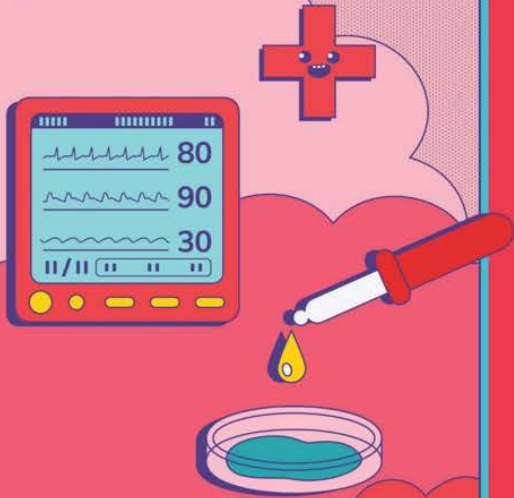
International Logistics

Leisure and Travel Operations

Service Management



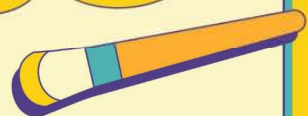
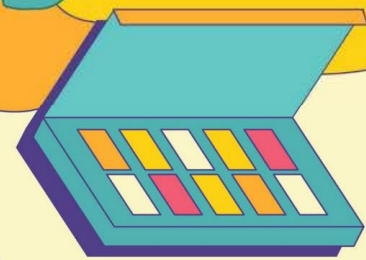
# SCHOOL OF APPLIED & HEALTH SCIENCES



## ONLY AT ITE COLLEGE EAST

Nitec Course	Minimum Entry Requirements
<b>Applied Food Science</b>	<b>3 GCE 'N' Level Passes:</b> Grade A-D or Grade 1-5 in Mathematics or Science** and two other subjects  <b>OR</b>  <b>2 GCE 'O' Level Grades:</b> Grade 1–8 in any two subjects  <i>Note:</i> <i>**In lieu of Science, Mobile Robotics and Smart Electrical Technology subjects can be used for admission to these courses</i>
<b>Chemical Process Technology</b>	
<b>Community Care &amp; Social Services</b>	
<b>Opticianry</b>	
<b>Nursing</b>	<b>3 GCE 'N' Level Passes:</b> Grade A–D or Grade 1-5 in English Language, Mathematics and one other subject  <b>OR</b>  <b>2 GCE 'O' Level Grades:</b> Grade 1–8 in any two subjects

# SCHOOL OF BUSINESS & SERVICES



Nitec Course	College			Minimum Entry Requirements
	Central	East	West	
Business Services	✓	✓	✓	<b>3 GCE 'N' Level Passes:</b> Grade A–D or Grade 1-5 in English Language and two other subjects  <b>OR</b>
Floristry	✓			
Travel & Tourism Services			✓	<b>2 GCE 'O' Level Grades:</b> Grade 1–8 in any two subjects
Beauty & Wellness		✓		<b>Completed GCE 'N' or GCE 'O' Level</b>
Hair Fashion & Design		✓		
Logistics Services		✓		
Retail Services	✓	✓	✓	

3-Year <i>Higher Nitec</i> Course	College			Minimum Entry Requirements
	Central	East	West	
Accounting	✓	✓	✓	<b>3 GCE 'N' Level Passes:</b> Grade A–D or Grade 1-5 in English Language and two other subjects  <b>OR</b>  <b>2 GCE 'O' Level Grades:</b> Grade 1–8 in any two subjects
Sport Management	✓	✓	✓	

# SCHOOL OF DESIGN & MEDIA

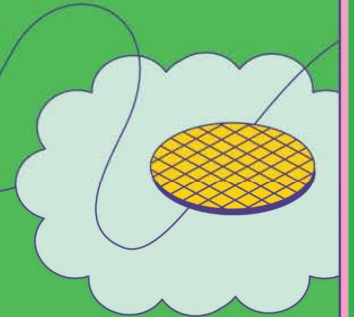
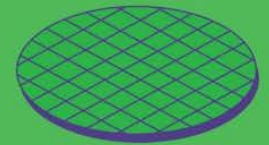


## ONLY AT ITE COLLEGE CENTRAL

<i>Nitec</i> Course	Minimum Entry Requirements
<b>Architectural Technology</b>	<b>3 GCE 'N' Level Passes:</b> Grade A–D or Grade 1-5 in Mathematics and two other subjects  <b>OR</b> <b>2 GCE 'O' Level Grades:</b> Grade 1–8 in any two subjects
<b>Interior &amp; Exhibition Design</b>	
<b>Fashion Apparel Production &amp; Design</b>	<b>3 GCE 'N' Level Passes:</b> Grade A–D or Grade 1-5 in Mathematics or Science** and two other subjects  <b>OR</b> <b>2 GCE 'O' Level Grades:</b> Grade 1–8 in any two subjects  <i>Note:</i> ** In lieu of Science, Mobile Robotics and Smart Electrical Technology subjects can be used for admission to these courses
<b>Video Production</b>	
<b>Digital Animation</b>	<b>Completed GCE 'N' or GCE 'O' Level</b>
<b>Product Design</b>	
<b>Visual Communication</b>	<b>3 GCE 'N' Level Passes:</b> Grade A–D or Grade 1-5 in English Language and two other subjects  <b>OR</b> <b>2 GCE 'O' Level Grades:</b> Grade 1–8 in any two subjects

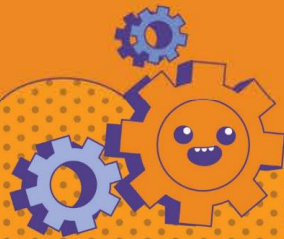
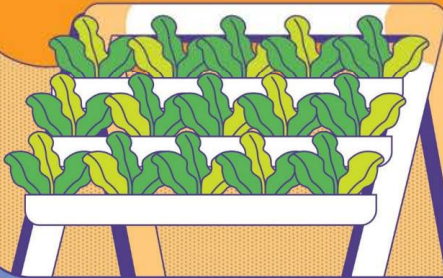
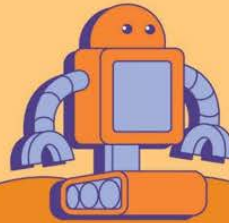


# SCHOOL OF ELECTRONICS & INFO-COMM TECHNOLOGY



3-Year <i>Higher Nitec</i> Course	College			Minimum Entry Requirements
	Central	East	West	
Business Information Systems		✓		<b>3 GCE 'N' Level Passes:</b> Grade A–D or Grade 1-5 in Mathematics or Science** and two other subjects  <b>OR</b>  <b>2 GCE 'O' Level Grades:</b> Grade 1–8 in any two subjects  <i>Note:</i> **In lieu of Science, Mobile Robotics and Smart Electrical Technology subjects can be used for admission to these courses
Cyber & Network Security	✓	✓	✓	
Electronics Engineering	✓	✓	✓	
IT Applications Development	✓	✓	✓	
IT Systems & Networks	✓	✓	✓	
Security System Integration			✓	

# SCHOOL OF ENGINEERING



Nitec Course	College			Minimum Entry Requirements
	Central	East	West	
Aerospace Avionics	✓			<b>3 GCE 'N' Level Passes:</b> Grade A–D or Grade 1-5 in Mathematics and two other subjects  <b>OR</b> <b>2 GCE 'O' Level Grades:</b> Grade 1–8 in any two subjects
Aerospace Technology	✓			
Electrical Technology (Lighting & Sound)		✓	✓	
Electrical Technology (Power & Control)		✓	✓	
Aerospace Machining Technology	✓			<b>3 GCE 'N' Level Passes:</b> Grade A–D or Grade 1-5 in Mathematics or Science** and two other subjects  <b>OR</b> <b>2 GCE 'O' Level Grades:</b> Grade 1–8 in any two subjects  <i>Note:</i> <b>**In lieu of Science, Mobile Robotics and Smart Electrical Technology subjects can be used for admission to these courses</b>
Digital & Precision Engineering	✓			
Mechatronics & Robotics	✓		✓	
Rapid Transit Technology			✓	

<i>Nitec</i> Course	College			Minimum Entry Requirements
	Central	East	West	
Automotive Technology			✓	Completed GCE 'N' or 'O' Level
Built Environment (Mechanical & Electrical Services)		✓	✓	
Built Environment (Vertical Transportation)		✓		
Mechanical Technology	✓	✓	✓	
Urban Greenery & Landscape		✓		



# SCHOOL OF HOSPITALITY

## ONLY AT ITE COLLEGE WEST

<i>Nitec</i> Course	Minimum Entry Requirements
<b>Hospitality Operations</b>	<b>3 GCE 'N' Level Passes:</b> Grade A-D or Grade 1-5 in English Language and two other subjects
<b>Pastry &amp; Baking</b>	
<b>Western Culinary Arts</b>	<b>2 GCE 'O' Level Grades:</b> Grade 1–8 in any two subjects
<b>Asian Culinary Arts</b>	<b>Completed GCE 'N' or GCE 'O' Level</b>

# HOW TO COMPUTE YOUR AGGREGATE POINTS FOR NITEC COURSES WITH NORMAL TECHNICAL SUBJECTS

Normal (Technical) Grade	ITE Aggregate Points
A	1
B	2
C	3
D	4
U	5

Types of Bonus Points	Number of Bonus Points Awarded
CCA Grades:	
a) Excellent or Grades A1 – A2	2 points
b) Good or Grades B3 – C6	1 point



# HOW TO COMPUTE YOUR AGGREGATE POINTS FOR NITEC COURSES WITH NORMAL ACADEMIC SUBJECTS

Normal (Academic) Grade	ITE Aggregate Points
1, 2	1
3	2
4	3
5	4
U	5

Types of Bonus Points	Number of Bonus Points Awarded
CCA Grades:	
a) Excellent or Grades A1 – A2	2 points
b) Good or Grades B3 – C6	1 point

# TRAINEESHIP PROGRAMME

Get an attractive monthly salary while training towards a nationally-recognised qualification with the ITE Traineeship Programme!



**Gain a headstart  
in your career**



**Full sponsorship of  
your course fees**



**Learn skills  
in a real-work  
environment**



**Train under qualified and  
experienced industry  
professionals**



**Receive the same  
national certificate as  
full-time ITE graduates**



**Enjoy great staff benefits  
and a monthly salary of  
\$1,200 - \$1,600**

# TRAINEESHIP PROGRAMME

Grab the opportunity to work in reputable companies like **Sheraton Towers Singapore Hotel**, Crowne Plaza Changi Airport, **Keppel Shipyard Limited**, Sembcorp Marine Ltd, **Motor Image Enterprises Pte Ltd**, National Dental Centre Singapore, **Soup Restaurant Singapore Pte Ltd**, Jean Yip Salon Pte Ltd, **Toni & Guy Singapore**, Regent Singapore, **Murata Electronics Singapore (Pte) Ltd**, Pet Lovers Centre Pte Ltd and many more!

## Progression Opportunities

A Trainee who successfully completes the programme and meet the minimum entry requirements can take up

- a relevant *Higher Nitec* course,
- Work-Study Diploma,
- ITE Technical Diploma, or
- Polytechnic Diploma



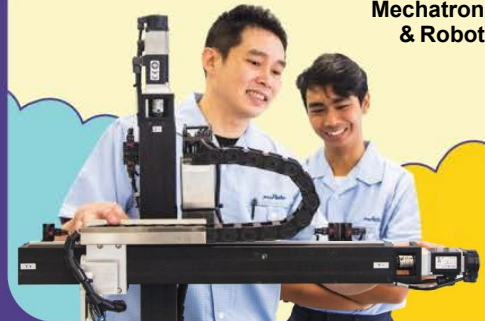
Scan and view the video on Traineeship Programme



**Nitec in Hair Fashion & Design**



**Nitec in Mechatronics & Robotics**



**Nitec in Community Care & Social Services**



# CO-CURRICULAR ACTIVITIES



What's school life without CCAs or your squad? At ITE, a vibrant campus life awaits you with loads of exciting activities for you and your squad!



## Arts

Acoustic Pop Band  
K-Pop Dance  
Magic Club  
Photography  
Sand Animation  
Visual Arts



## Community

Community Service  
Student Volunteer  
Rotaract Club  
Safe Home Club



## Sports & Games

Archery  
Cycling  
Karate  
Rock Climbing  
Swimming  
Volleyball



## Innovation & Enterprise

Automation & Robotics  
Clean Energy  
Cyber Security Club  
Drone Club  
Entrepreneurship Club

## Leadership

ACE Development  
Bridge Leaders  
Student Council  
Student Ambassadors



# CONTACT US



[www.ite.edu.sg](http://www.ite.edu.sg)



[www.facebook.com/ITESpore](https://www.facebook.com/ITESpore)



[instagram.com/itespore](https://www.instagram.com/itespore)



[youtube.com/user/ITECorpAffairs](https://www.youtube.com/user/ITECorpAffairs)



1800-2222-111

[training@ite.edu.sg](mailto:training@ite.edu.sg)





ENGINEERED BY

# BELIEF

NORHEESHAM BIN RAHMAT

MOTIVATED TO GROW

▶

EQUIPPED TO PROGRESS

2014  
HIGHER NITEC  
IN MARINE &  
OFFSHORE  
TECHNOLOGY

▶

POISED TO SHINE

2021  
ITE WORK-STUDY  
DIPLOMA  
IN MARINE &  
OFFSHORE  
ENGINEERING

▶

NOW  
ASSISTANT  
PLANNING  
ENGINEER  
KEPPEL OFFSHORE  
& MARINE LTD

▶ THE FUTURE STARTS FROM WITHIN | [www.ite.edu.sg](http://www.ite.edu.sg)