

# RELEASE OF GCE 'N' LEVEL RESULTS 17 DEC 2018

JANUARY 2019  
JOINT INTAKE EXERCISE (JIE)



# JOINT INTAKE EXERCISE (JIE)

Joint Intake Exercise 'N' (JIE 'N') for the **2-year Nitec Courses**

The JIE 'N' is conducted to enable GCE 'N' (Technical) / GCE 'N' (Academic) / GCE 'O' Level holders to apply for the **2-year National ITE Certificate (Nitec)** courses conducted by Institute of Technical Education (ITE).

GCE 'N' Technical/ GCE 'N' (Academic) /GCE 'O' Level holders can choose to take up course under **Full-Time Education** or **Traineeship**.



# JOINT INTAKE EXERCISE (JIE)

## Joint Intake Exercise 'E' (JIE 'E') for the 3-year Nitec Courses with Enhanced Nitec Foundation Programme

The JIE 'E' is conducted to enable GCE 'N' Technical students with **0 or 1** GCE 'N'(Technical) Level pass build the necessary literacy and numeracy foundations that will enable them to successfully complete their *Nitec* course.

Eligible GCE 'N' (Technical) Level holders may apply for *Nitec* courses under both the JIE 'N' and JIE 'E' intake exercises. However, you may only receive one offer from either intake exercises.



# JOINT INTAKE EXERCISE (JIE)

Joint Intake Exercise 'H' (JIE 'H') for Higher Nitec Courses under Direct Entry Scheme to Polytechnic Programme (DPP)

The JIE 'H' is conducted to enable GCE 'N' (Academic) holders with the **relevant pre-requisites** to apply for the Higher National ITE Certificate (*Higher Nitec*) courses conducted by ITE under Direct Entry Scheme to Polytechnic Programme (DPP).

Eligible GCE 'N' (Academic) Level holders may apply for *Higher Nitec* courses under both the JIE 'H' and *Nitec* courses under the JIE 'N' intake exercises. However, you are offered a *Higher Nitec* course under the JIE 'H', you will not be offered a *Nitec* course under the JIE 'N'.



# JOINT INTAKE EXERCISE (JIE)

All applications for courses must be submitted online through the ITE website at

- <https://www.ite.edu.sg>



# JOINT INTAKE EXERCISE (JIE)

The JIE registration will be held over a period of **4** calendar days, starting from **2.30 pm on 17 Dec 18** to **5 pm on 20 Dec 18**.

Students can access the computer system and printer in the Aroozoo Library to complete their JIE from **18 Dec to 20 Dec, 9 am -12 pm**.

A set of instructions on the ITE application process is also made available in the Aroozoo Library.



# APPEAL FOR REVIEW OF RESULTS

The fee for an appeal to review the result of any subject is \$112.35 per subject (inclusive of 7% GST)

Students who do not have strong grounds should be discouraged from submitting an appeal

Deadline : **Fri, 21 Dec, 5pm**

# Making ITE Enrolment Easier for our N(A) and N(T) School Leavers

- Students who qualify for ITE (to be collected with the results slips) will receive
  - 1 copy of Form N (used for JIE)
  - 1 copy of ITE's Admission Booklet with scholarship brochure inserted
  - 1 copy of ITE's Traineeship brochure





# Enhanced Nitec Foundation Programme (eNFP) or 3-Year Nitec Course in ITE

- Students who qualify for ITE (to be collected with the results slips) will receive
  - 1 copy of eNFP Invitation Letter for school leaver (addressed to student)
  - 1 copy of eNFP Invitation Letter for parent/guardian (in multiple languages)



# Application to ITE

- Main Phase ends on **20 Dec 18**
- Late applications will still be accepted by ITE via two additional phases
  - Appeal Phase/Late Application –  
**Fri, 28 Dec 18 to Wed, 2 Jan 19**
  - Final Top-Up Phase –  
1<sup>st</sup> Top-up Phrase Application  
**Wed, 9 Jan 19 to Fri, 17 Jan 19**  
2<sup>nd</sup> Top-up Phrase Application  
**Tue, 22 Jan 19 to Thu, 7 Feb 19**



# MySkillsFuture

For more information on post-GCE N-Level options, visit [www.myskillsfuture.sg/secondary](http://www.myskillsfuture.sg/secondary)



A screenshot of the MySkillsFuture website homepage. The header features the MySkillsFuture logo on the left and navigation links for 'About', 'Know Yourself', 'World of Work', 'Education Guide', 'Help', 'Feedback', a search icon, and a 'Login' button on the right. The main content area has a background image of four students in school uniforms looking at a plant. Overlaid on this image is the text 'About MySkillsFuture' with a play button icon, followed by a descriptive paragraph: 'A one-stop portal that empowers you to embark on a journey of self-discovery and make informed education and career choices. Use the information and tools to explore various education and career pathways, and take charge of your future.'

# What's Next (after N-Levels)

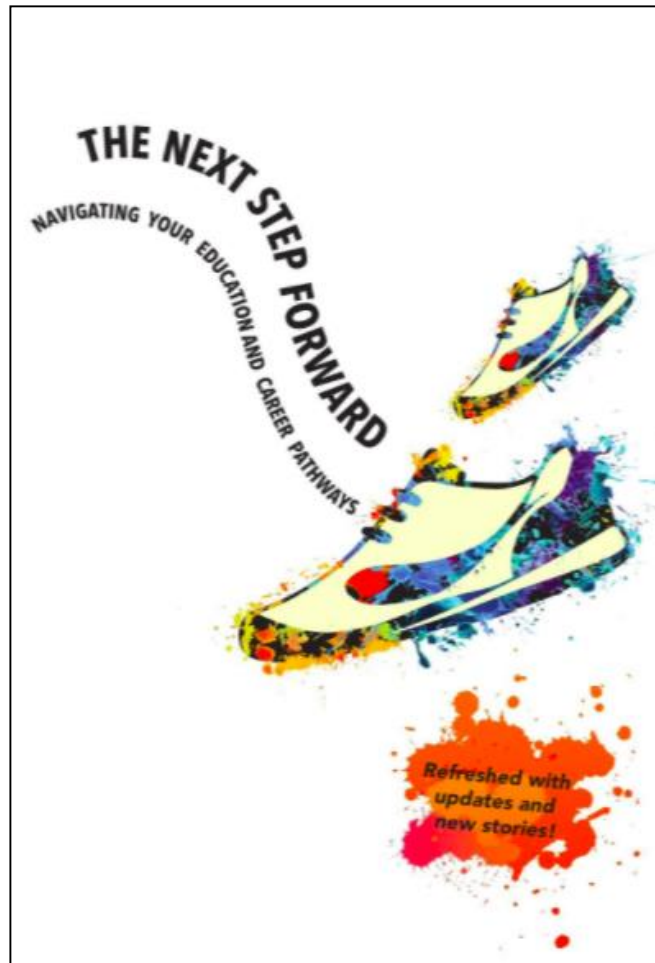
[www.moe.gov.sg/microsites/whats-next](http://www.moe.gov.sg/microsites/whats-next)



Useful Resources

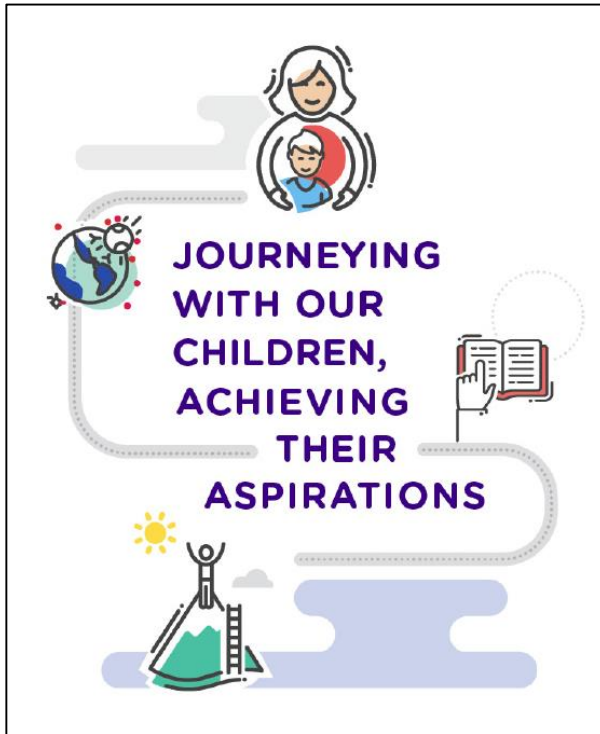
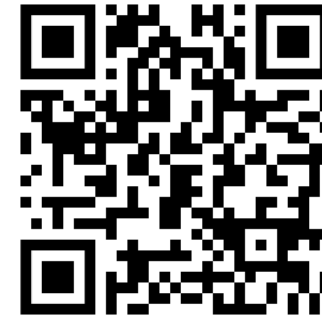
# The Next Step Forward

[www.moe.gov.sg/the-next-step-forward](http://www.moe.gov.sg/the-next-step-forward)



# ECG Parent Guide



[www.moe.gov.sg/ECG-parent-guide](http://www.moe.gov.sg/ECG-parent-guide)



## 7 Points to Note When Supporting Your Children's Education and Career Journey

- 1 Show Love and Concern**  

- 2 Observe Your Children's Strengths and Interests**  

- 3 Listen to Your Children**  

- 4 Provide a Window to the World of Work**  

- 5 Support Your Children's Career Interests and Aspirations**  

- 6 Instil the Importance of Developing Transferable Skills**  

- 7 Model Lifelong Learning**  




## Need ECG Support after your N-Levels?

- Speak with your teachers and parents for general advice on education progression and course selection
- For additional support on education and course exploration, book an appointment with ECG Counsellor, Ms Teoh

**Tue (18 Dec): 9am to 4.30pm**

**Venue: Conference Room**

**Please book your session using the online form:**

**<https://calendly.com/msteoh/gess/12-18-2018>**

**Or email Ms Teoh at: [Teoh\\_fan\\_yun@moe.edu.sg](mailto:Teoh_fan_yun@moe.edu.sg)**

# ECGC SUPPORT @ MOE ECG CENTRE

51 Grange Road, Blk 1, #01-03/04, Singapore 249564

Email: [MOE\\_ECG@moe.gov.sg](mailto:MOE_ECG@moe.gov.sg)

Hotline: +65 68311420

Sessions are strictly by appointment only.

Book at [http://bit.ly/moe\\_ecg](http://bit.ly/moe_ecg)

Open from 10 to 29 Dec 2018, 9am to 5pm

# ECGC SUPPORT @ ITE

ITE Hotline: 1800-2222 111

ITE Campus: <https://www.ite.edu.sg/wps/portal/contactus>

ITE Learning Accessibility Office [Students with SEN]:

<https://tinyurl.com/learning-accessibility>



# ECG Centre @ MOE (Grange Road)

- Making informed decisions is important for successful transition from school to further education.
- Speak with your teachers and ECG Counsellors in schools, besides your parents, on the possible pathways.
- ECG counselling service is available for GCE N-Level students from **10<sup>th</sup> Dec 2018 to 29<sup>th</sup> Dec 2018**
- Details on how to make an appointment can be found in the What's Next pamphlet distributed to you.



# TIMELINE

## APPLICATION DEADLINES DEC 2018 – FEB 2019

	PFP	DPP	ITE	Sec 5
Required grades	ELMAB3 less than or equal to 12 At least N(A)-level Grade 3 for all subjects used in computing ELMAB3 Note: Certain PFP courses require an EL grade of 2 or better	ELMAB3 less than or equal to 19 AND EL ≤4 and MA ≤4 AND at least a grade 5 for any three other subjects excluding CCA	Completed GCE N-Level	ELMAB3 less than or equal to 19; Grade 5 for all ELMAB3 subjects
Application dates	Jan 2019 Day 1 of 'O' Level results release and will remain open for five days thereafter (at 4.00 pm on Day 6 as the last day for application)	Mon 17 Dec 18, 2.30pm to Thurs 20 Dec 18, 5pm  Jan 19 4NA Students who were not previously eligible but are now eligible will also be invited to apply for the DPP.	<u>1st Phase (Main Phase)</u> Mon 17 Dec 18, 2.30pm to Thurs 20 Dec 18, 5pm  <u>2nd Phase (Late Application/Appeal Phase)</u> Fri 28 Dec 18 to Wed 2 Jan 19  <u>Final Top-Up Phase</u> 1 <sup>st</sup> Top-up Phrase Application Wed 9 Jan 19 to Fri 17 Jan 19 2 <sup>nd</sup> Top-up Phrase Application Tue 22 Jan 19 to Thu 7 Feb 19	<u>School Reply Form – 20 Dec 18, 5 pm</u>
Date of results/ outcome release	Jan 2019	Mon 24 Dec 18 from 9am	<u>Main Phase</u> Fri 28 Dec 18 at 9am <u>2<sup>nd</sup> Phase</u> Wed 9 Jan 19 at 9am <u>Final Top-Up Phase</u> 1 <sup>st</sup> Top-up Phrase Mon 14 Jan 19 to Mon 21 Jan 19 2 <sup>nd</sup> Top-up Phrase Application Tue 22 Jan 19 to Wed 13 Feb 19	
Acceptance period		Mon 24 Dec 18, 9am to Thurs 27 Dec 18, 3pm	<u>Main Phase</u> Fri 28 Dec 18 to Wed 2 Jan 19 <u>2<sup>nd</sup> Phase</u> Wed 9 Jan 19 to Fri 11 Jan 19 <u>Final Top-Up Phase</u> 1 <sup>st</sup> Top-up Phrase Mon 14 Jan 19 to Mon 21 Jan 19 2 <sup>nd</sup> Top-up Phrase Application Tue 22 Jan 19 to Wed 13 Feb 19	
Remarks	Students to withdraw from Sec 5 in 2019 <u>only after</u> they have accepted PFP offer	DPP application portal: www.ite.edu.sg	www.ite.edu.sg	

# Thank You!

---

**GAN ENG SENG SCHOOL**  
1 Henderson Road Singapore 159561

