

# RELEASE OF GCE 'O' LEVEL RESULTS 10 JAN 2025

## JOINT ADMISSIONS EXERCISE (JAE)

# JOINT ADMISSIONS EXERCISE (JAE)

The JAE is conducted annually by the Ministry of Education (MOE) to allow holders of GCE O-Level certificate to apply for admission to courses offered by the **Junior Colleges (JCs), Millennia Institute (MI), Polytechnics** and **Institute of Technical Education (ITE)**.

# JOINT ADMISSIONS EXERCISE (JAE)

All students successfully admitted to a school through the Direct School Admission-JC **(DSAJC)** Exercise / Polytechnic Early Admissions Exercise **(Poly EAE)** / ITE Early Admissions Exercise **(ITE EAE)** will not be able to participate in JAE.

# JOINT ADMISSIONS EXERCISE (JAE)

You will receive a **digital copy of Form A** via your registered email addresses **from 3pm on Fri, 10 Jan.**

All candidates eligible for JAE may also **download a copy of Form A from the JAE internet system (JAE-IS)** during the application period.

Form A will list the applicant's **gross aggregate scores for JC, MI, polytechnic, ITE aggregate types and courses which he/she is eligible to apply** for under the JAE.

# JOINT ADMISSIONS EXERCISE (JAE)

All applications for courses must be submitted **online through the JAE-Internet System (JAE-IS)**. The JAE-IS is accessible through the JAE website at [www.moe.gov.sg/jae](http://www.moe.gov.sg/jae) using **Singpass**.

Applicants are strongly encouraged to use the JAE worksheet ([www.moe.gov.sg/jaeworksheet](http://www.moe.gov.sg/jaeworksheet)) before submitting their online application.

# JOINT ADMISSIONS EXERCISE (JAE)

Applicants can find more information on the following MOE websites:

- **JAE website** for more details on the JAE ([www.moe.gov.sg/jae](http://www.moe.gov.sg/jae))
- **SchoolFinder** for details of the offerings by and previous entry score ranges for JCs and MI ([www.moe.gov.sg/schoolfinder](http://www.moe.gov.sg/schoolfinder))
- **CourseFinder** for courses offered by the polytechnics and ITE, based on aggregate type and area of interest ([www.moe.gov.sg/coursefinder](http://www.moe.gov.sg/coursefinder))

# JOINT ADMISSION EXERCISE (JAE)

The JAE 2025 registration will be held over a period of **6** calendar days, starting from

**4.00 pm on 10 January 2025** to  
**4.00 pm on 15 January 2025.**

During the JAE registration period, students can seek assistance using the online JAE Request Form found at [www.moe.gov.sg/jaerequestform](http://www.moe.gov.sg/jaerequestform).

Please note that Library will be opened for JAE registration strictly by appointment (**Except 12 – 1pm Lunch**) through FTs.

Date	Time
10 Jan 2025	3pm – 4pm
13, 14 and 15 Jan 2025	9am – 4pm

# JOINT ADMISSIONS EXERCISE (JAE) – JCs and MI

JCs and MI offer a variety of subjects and different subject combinations. They may also set their **own school-based criteria** for subjects offered, based on professional and student-centric considerations.

Posting to an Arts, Science or Commerce course does not guarantee that students will be able to offer their preferred subject combinations. **Students should check the website of the respective JCs and MI for more details on the subject combinations offered in the Arts, Science and Commerce courses and school-based criteria for subjects offered.**



## JOINT ADMISSIONS EXERCISE (JAE) – Poly/ITE courses

Beyond academic requirements, students should note that some polytechnic/ ITE courses may require students **to meet non-academic requirements**, such as passing of medical examinations, in order to comply with industry requirements.

**Students are advised to take these requirements into account when making their choices.**

# Direct School Admission - JCs

Students who had **accepted** offers through the 2024 Direct School Admission – Junior Colleges (DSA-JC) **will be admitted** to their chosen JC if they have **met the eligibility criteria** for admission based on their GCE O-Level examination results.

Students admitted to a JC through DSA-JC **will not be eligible** to participate in the JAE.

Students who do not meet the JC admission criteria may take part in the JAE to apply for courses which they are eligible for. More details on DSA-JC can be found at [www.moe.gov.sg/dsa-jc](http://www.moe.gov.sg/dsa-jc).

# JOINT ADMISSION EXERCISE (JAE)

The posting results of the JAE application will be released on **Tuesday, 4 February 2025** through the following modes:

- **Short Message Service (SMS)** to the Singapore mobile number provided by the applicant during registration
- **JAE-IS**, accessible through the JAE website using your Singpass

# APPEAL FOR REVIEW OF RESULTS

All appeals must be submitted through the school.

A fee will be charged for an appeal to review the result for each subject.

Type of appeal	Fees (inclusive of GST)
Individual Appeal	S\$114.45
Group Appeal	S\$713.95 (for the first five candidates)  S\$103.55 (for each additional candidate up to a maximum of 15 candidates)

Deadline : **Thursday, 16 January 2025**

# CERTIFICATE AMENDMENT REQUEST

Candidates may request for a re-print of their certificate only if their name were printed wrongly due to misspelling.

There will be an amendment fee of \$50 (including GST) for each certificate that requires a re-print.

Request to be submitted by **16 Jan 2025**

# Progression Pathways for Secondary Four Normal (Academic) Students

- Polytechnic Foundation Programmes (PFP)
- Direct-Entry-Scheme to Polytechnic Programme (DPP)

# Polytechnic Foundation Programmes (PFP)

PFP – eligible students will be issued a **Form 'P'**

Your password can be found in **Form 'P'**.

Students should use the respective passwords to submit their applications online via the PFP website at

<https://pfp.polytechnic.edu.sg/PFP/index.html>

More information on the eligibility requirements for the PFP, as well as how O-Level results are considered in the computation of the ELMAB3 aggregate, can be found on the PFP website.

# Polytechnic Foundation Programmes (PFP)

Applications for the PFP will be open from **1.30 pm on Friday, 10 January 2025** until **4.00pm on Wednesday, 15 January 2025**. The PFP posting results will be released at **1.30 pm on Wednesday, 22 January 2025** through the PFP website.

Students must indicate their decision to **accept/reject/appeal** in the PFP Portal by **4.00pm on Monday, 27 January 2025**.

More details on the PFP can be found at <http://pfp.polytechnic.edu.sg>.



# Direct-Entry-Scheme to Polytechnic Programme (DPP)

Secondary 5 Normal (Academic) students who are newly eligible after taking into account their O-Level examination results should submit their DPP applications online via the DPP application portal at

[www.ite.edu.sg/apply-for-ite-courses](http://www.ite.edu.sg/apply-for-ite-courses).

The final application phase for the DPP will open from **12.00 am on Friday, 10 January 2025 to 11.59pm on Tuesday, 14 January 2025.**

# Direct-Entry-Scheme to Polytechnic Programme (DPP)

The DPP posting results for applications made under the final application phase will be released **at 9.00am on Wednesday, 17 January 2025** through the DPP application portal.

Upon receiving their DPP posting results, students will have to indicate in the online system whether they are **accepting/rejecting/appealing** their DPP offers **by 11.59pm on Tuesday, 21 January 2025**.

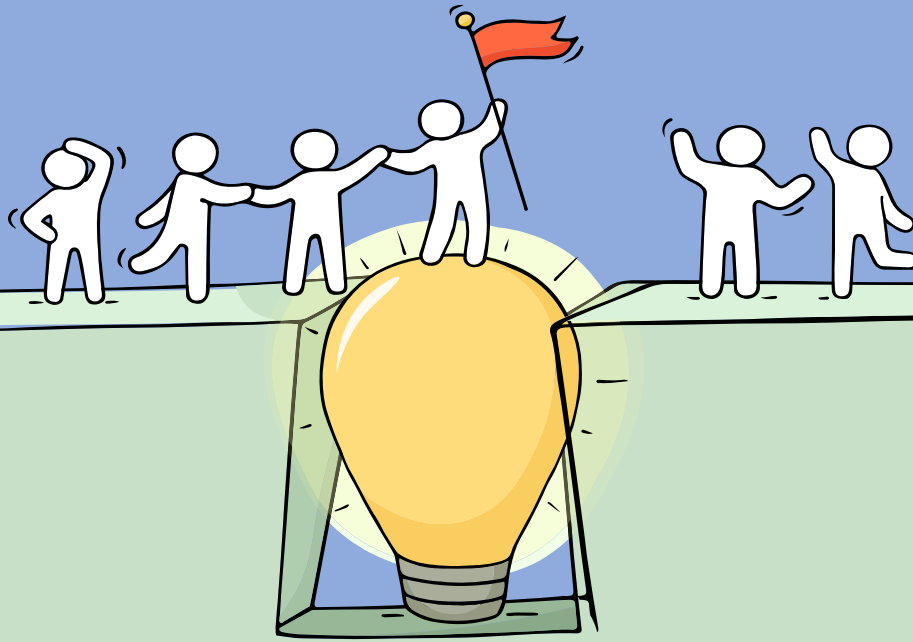
# Successful PFP and/or DPP Applicants

Students who have been offered a place in the DPP under the final application phase should report to ITE on **Wednesday, 22 January 2025**, upon acceptance of their DPP course offer.

The last day of school for Secondary 5 students who have accepted a place in the PFP will be **on Friday, 31 January 2025**. Students will be informed by the respective polytechnics on the enrolment dates for the PFP.

Students who accepted a place in the earlier application phase of the DPP in December but have now decided to take up a PFP offer will need to apply to ITE to withdraw from the DPP first, before they are able to take up the PFP offer.

# Sources of ECG Support



# ECG Guidance



**Mdm Leong Pui Wan**  
**HOD/CCE**

**Education  
and Career  
Coach  
(ECC),  
Corinna Teo  
Bee Keow**



Education & Career Guidance

# Education and Career Guidance (ECG) Support for 'O' Level Students

To complement the ECG services provided by schools, students may also wish to consult an ECG Counsellor at the MOE ECG Centre. The MOE ECG Centre offers online or phone counselling services to GCE O-Level students.

ECG Counselling Appointment Booking at  
<https://go.gov.sg/moe-ecg-centre>

# Thank You