

RELEASE OF GCE 'N' LEVEL RESULTS 16 DEC 2024

JANUARY 2025
JOINT INTAKE EXERCISE (JIE)



JOINT INTAKE EXERCISE (JIE)

The Joint Intake Exercise (JIE) allows students who have taken the N-Level or O-Level examinations to apply directly to the Institute of Technical Education (ITE).



JOINT INTAKE EXERCISE (JIE)

The JIE includes applications for:

JIE-H: 2-year Higher Nitec Course with Direct Entry Scheme to Polytechnic Programme (DPP)

JIE-N: 2-Year Nitec or 3-year Higher Nitec Course

JIE-E: 3-year or 4-year Enhanced Foundation Programme



JOINT INTAKE EXERCISE (JIE)

<https://www.moe.gov.sg/post-secondary/admissions/jie>



JOINT INTAKE EXERCISE (JIE)

All applications for courses must be submitted online through the ITE website at

- <https://www.ite.edu.sg>



JOINT INTAKE EXERCISE (JIE)

The JIE registration will be held over a period of **4** calendar days, starting from **16 Dec 2024, 2.30 pm to 19 Dec 2024, 5pm.**



JOINT INTAKE EXERCISE (JIE)

Please note that laptops will be provision in the library for JIE registration strictly by appointment basis from

17 Dec to 19 Dec,

9am – 3 pm (Except 12 – 1pm Lunch) through FTs.



JOINT INTAKE EXERCISE (JIE)

If you need help with your application, please call or email to any of the [Customer & Visitor Centres at ITE Colleges](#) during office hours.



JOINT INTAKE EXERCISE (JIE)

- Students who qualify for ITE (to be collected with the results slips) will receive
 - 1 copy of Form N (used for JIE)



JUST-IN-TIME INFORMATION on JIE APPLICATION (Jan 2025 intake) For N(A)* and N(T) School Leavers

*Applicable for N(A) students progressing to ITE
Briefing Slides for Students

A PRESENTATION BY
MINISTRY OF EDUCATION, SINGAPORE



Information for Students

Refer to slides 10 to 17 for:

- key dates for intake activities
- JIE application process
- follow-up support by schools and MOE HQ
- additional information for making an informed decision on which course to apply for in ITE

Schools should factor how students who were not present on the day of release of N-level results can also access the information on JIE application, resources and support.



Key Dates for Jan 2025 Intake Exercise

Key Activity	Period for 2-Year and 3-Year Nitec Courses, and 3-Year and 4-year Higher Nitec courses	Remarks
1st Phase (Main Phase)		
Application	16 Dec 2024 (2.30pm) to 19 Dec 2024 (5pm)	Apply through the Internet at https://www.ite.edu.sg with NRIC / FIN and Date of Birth. You may also apply using SingPass.
Release of Results	30 Dec 2024 at 9am	Check results at https://istudent.ite.edu.sg with web ID and password
Acceptance of Course Offer Period	30 Dec 2024 to 3 Jan 2025	Accept course offer at https://istudent.ite.edu.sg with web ID and password
2nd Phase (Late Application/Appeal Phase)		
Application	30 Dec 2024 to 3 Jan 2025	Apply through the Internet at https://istudent.ite.edu.sg with NRIC / FIN and Date of Birth. You may also apply using SingPass.
Release of Results	10 Jan 2025 at 9am	Check results at https://istudent.ite.edu.sg with web ID and password
Acceptance of Course Offer Period	10 Jan 2025 to 12 Jan 2025	Accept course offer at https://istudent.ite.edu.sg with web ID and password
3rd Phase (Final Top-up Phase)		
Application	1 st Top-up Phase Application - 10 Jan to 17 Jan 2025 2 nd Top-up Phase Application - 23 Jan to 7 Feb 2025	Apply through the Internet at https://istudent.ite.edu.sg with NRIC / FIN and Date of Birth. You may also apply using SingPass.
Release of Results	1 st Top-up Phase - 14 Jan to 23 Jan 2025 2 nd Top-up Phase - 23 Jan to 13 Feb 2025	Check results at https://istudent.ite.edu.sg with web ID and password
Acceptance of Course Offer Period	1 st Top-up Phase - 14 Jan to 23 Jan 2025 2 nd Top-up Phase - 23 Jan to 13 Feb 2025	Accept course offer at https://istudent.ite.edu.sg with web ID and password
Jan 2025 Intake Term Commencement Date: <u>13 Jan 2025</u>		



Information For Students on Key Dates for Jan 2025 intake

1. All N(A)*/N(T) school leavers are encouraged to submit an application during the **1st Phase (Main Phase)** between **16 Dec 2024 (2.30pm) to 19 Dec 2024 (5pm)**. Application results for the 1st Phase will be released on **30 Dec 2024 at 9am**.
2. If you wish to appeal, please accept the course offered **before** applying in the **2nd Phase (Late Application/Appeal Phase)** between **30 Dec 2024 to 3 Jan 2025**. The application results for the 2nd Phase will be known on **10 Jan 2025 at 9am**.
3. Unsuccessful applicants can appeal under the **3rd Phase (Final Top-up Phase)** between **10 Jan to 17 Jan 2025 and 23 Jan to 7 Feb 2025** for courses with vacancies. The application results for the 3rd Phase will be known between **14 Jan to 23 Jan 2025** and **23 Jan to 13 Feb 2025**.

*N(A) students progressing to ITE

For further enquiries, N-Level school leavers can contact
ITE Hotline: 1800-2222-111



JOINT INTAKE EXERCISE (JIE)

Summary (Application to ITE)

- Main Phase ends on **19 Dec 2024**
- Late applications will still be accepted by ITE via two additional phases
 - Appeal Phase/Late Application
30 Dec 2024 to 3 Jan 2025
 - Final Top-Up Phase
 - 1st Top-up Phrase Application
10 Jan to 17 Jan 2025
 - 2nd Top-up Phrase Application
23 Jan to 7 Feb 2025



Key Pointers for Students on ITE's Joint Intake Exercise (JIE)

ALL students in N(T) and N(A) students (who are not progressing to 5N(A) or repeating 4N(A)) are eligible for JIE. Those who were unsuccessful in EAE are also eligible for JIE.

Participation in JIE Main Phase is key to securing a place in ITE!

Use all 12 JIE choices wisely, as competition for 3-year Higher Nitec courses is keen!

Do consult your teachers / ECG counsellors to help you make your choices!

Do use the Last Aggregate Score (LAS) published in ITE's admission portal to help you make your course choices.

If you have received an additional letter, then you are eligible for the Enhanced Foundation Programme (EFP).

If you are eligible for EFP, make sure you apply for both the EFP and the 2-year Nitec/3-year Higher Nitec!

The EFP helps to build the necessary literacy and numeracy foundations that will enable you to successfully complete your course!

If you are counter-offered a course, accept it first before appealing for another course you may be more interested in!




STEP-BY-STEP INFORMATION FOR JIE APPLICATION

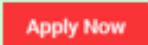
Online Application for


2-Year Nitec and 3-Year Higher Nitec Courses

3-Year Nitec/4-year Higher Nitec Course with EFP
(for N(T) students with 0, 1 "N" pass)

1. Go to <https://www.ite.edu.sg>.

2. Click  icon.

3. Under JIE 'N', click  icon to link to the application website

Under JIE 'E', click  icon to link to the application website

4. At the application website:

- Enter NRIC / FIN and Date of Birth to start application. You may also apply using [SingPass](#).
- Upon completion of application, applicants will receive their **web ID** and password.

*Students who are eligible for the 3-Year Nitec/4-Year Higher Nitec Course with EFP are encouraged to go through **both** JIE 'E' and JIE 'N' e-application process

Checking of Posting Results/Accept Course Offer

2-Year Nitec and 3-Year Higher
Nitec Courses

3-Year Nitec/4-year Higher Nitec
Course with EFP

(for N(T) students with 0, 1 "N" pass)

1. Go to <https://istudent.ite.edu.sg>.
2. Enter **web ID** and password.
3. Click '**Self-Service**' followed by '**Student Admission**' followed by '**View Application Results**' to view the application results and to accept course offer.

The above steps applies to all phases (refer to [Slide 11](#) for dates).
For more details, please refer to ITE website.

Additional Information For Students


Should you require further advice or assistance in your applications or future plans, please contact your teachers and/or ECG Counsellor.

For further inquiries, you may refer to the following hotlines and links for more information and advice on further education:

Institute of Technical Education (ITE)	
ITE Hotline (for ITE admissions and courses)	1800 2222 111 training@ite.edu.sg
ECG Centre @ MOE	
e-Appointment link	https://go.gov.sg/moe-ecg-centre

Additional Information For Students

The information listed in the table below will help you to make an informed decision on which choice of courses you could consider applying at ITE.

S/N	Information	Attachment/Link
1	ITE Factsheet 2024	 2024 IIBN Factsheet
2	ITE Course Booklet 2025	https://www.ite.edu.sg/courses/full-time-courses/download-ite-course-booklet
3	Information on Progression Opportunities (From <i>Nitec</i> Courses to <i>Higher Nitec</i> and Technical diplomas)	https://www.ite.edu.sg/admissions/full-time-courses/nitec-and-3-year-higher-nitec/progression-opportunities
4	Information on Progression Opportunities (from <i>Higher Nitec</i> courses to diploma courses)	https://www.ite.edu.sg/admissions/full-time-courses/higher-nitec/academic-progression

Progression Pathways for Secondary Four Normal (Academic) Students

- Polytechnic Foundation Programmes (**PFP**)
- Direct-Entry-Scheme to Polytechnic Programme (**DPP**)

Polytechnic Foundation Programmes (PFP)

Applications for the PFP will be open on the day of 2025 O-Level results release.

Secondary 4 N(A) students who intend to apply for the PFP should first progress to Secondary 5 on 2 January 2025.

All PFP-bound students are required to attend their Secondary 5N(A) classes in their secondary schools up till the last Friday of January 2025, i.e. 31 January 2025.

Direct-Entry-Scheme to Polytechnic Programme (DPP)

Applications for the DPP will be from **16 Dec, 2.30pm to 19 Dec, 5pm.**

2025 Sec 5NA students who are newly eligible after taking into account their O-Level examination results can also apply DPP under its final application phrase in Jan.

APPEAL FOR REVIEW OF RESULTS

Appeal Fees

Type of appeal	Fees (inclusive of GST)
Individual Appeal	All citizenship: S\$114.45
Group Appeal	S\$713.95 (for the first five candidates) S\$103.55 (for each additional candidate up to a maximum of 15 candidates)

Outcome of Appeal – by 31 Jan 2025 (Individual) and Mid-Feb 2025 (Group)

Students who do not have strong grounds should be discouraged from submitting an appeal

Deadline : 20 Dec, 12.30pm

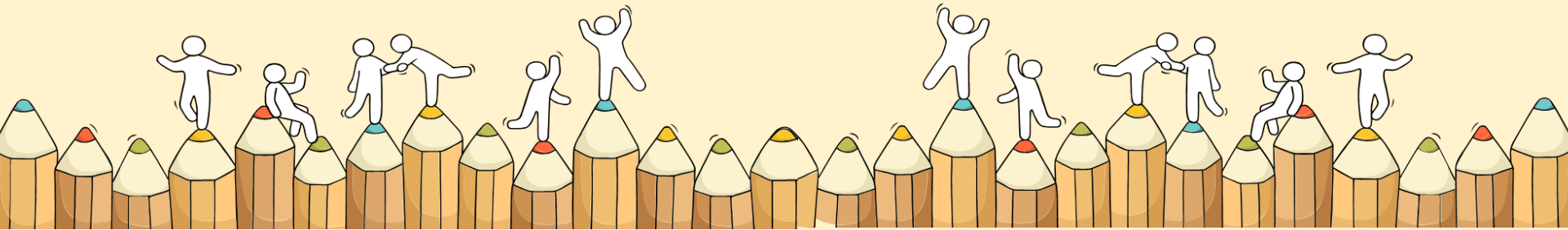
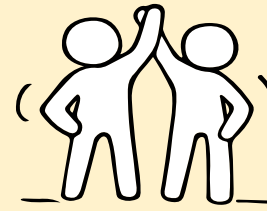
CERTIFICATE AMENDMENT REQUEST

Candidates may request for a re-print of their certificate only if their name were printed wrongly due to misspelling.

There will be an amendment fee of \$50 (including GST) for each certificate that requires a re-print.

Request to be submitted by **20 Dec 2024**

Sources of ECG Support



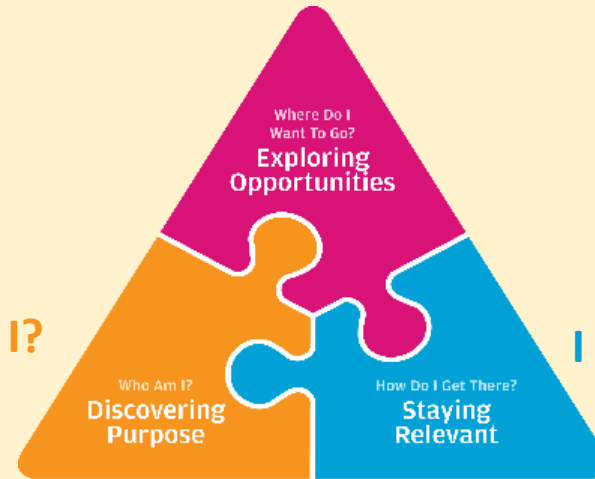
Thinking about Your Next Step?

Consider these questions...

Where do I want to go?

Who am I?

How Do I Get There?



In the infographic, you can find resources which can help you make informed decisions.

PLANNING YOUR NEXT STEP

These resources will help you chart your path ahead:



• What's Next Brochure
<https://go.gov.sg/whats-next-nlevel>



• Contact the ECG Centre @ MOE
<https://go.gov.sg/moe-ecg-centre>



• MySkillsFuture Student Portal
<https://go.gov.sg/MySFSec>







• Chat with your school's ECG Counsellor

Resources to help you make informed decisions



PLANNING YOUR NEXT STEP

These resources will help you chart your path ahead:

-  **What's Next Brochure**
<https://go.gov.sg/whats-next-nlevel>
-  **Contact the ECG Centre @ MOE**
<https://go.gov.sg/moe-ecg-centre>
-  **MySkillsFuture Student Portal**
<https://go.gov.sg/MySFSec>
-  **Chat with your school's ECG Counsellor**



MySkillsFuture Student Portal

Use the information and tools to explore various education and career pathways and take charge of your future.

Resources to help you make informed decisions

Post-Secondary Education

Learn more about the admissions exercises and programmes



<https://www.moe.gov.sg/post-secondary/admissions>

Learn more about the post-secondary education institutions



<https://moe.gov.sg/post-secondary/overview>

Be Empowered

Discover On My Way



About Discover On My Way (D:OMW)

Discover your education and career interests and chart your personal and professional future with **Discover On My Way!** Explore different careers, connect with industry professionals and peers, and get firsthand exposure at various job roles. Let's get you on your way to discovering!

[Join Programmes!](#)

We know – deciding on which course to take and what career to pursue isn't easy... Through programmes organised by NYC and our partners, you'll be able to meet professionals from various industries and youth on the same journey as you.



Outward Bound Job Taster



Esports Events Management Job Taster

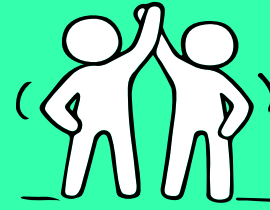


Career conversation and discovery



<https://go.gov.sg/domw>

Other ECG Support

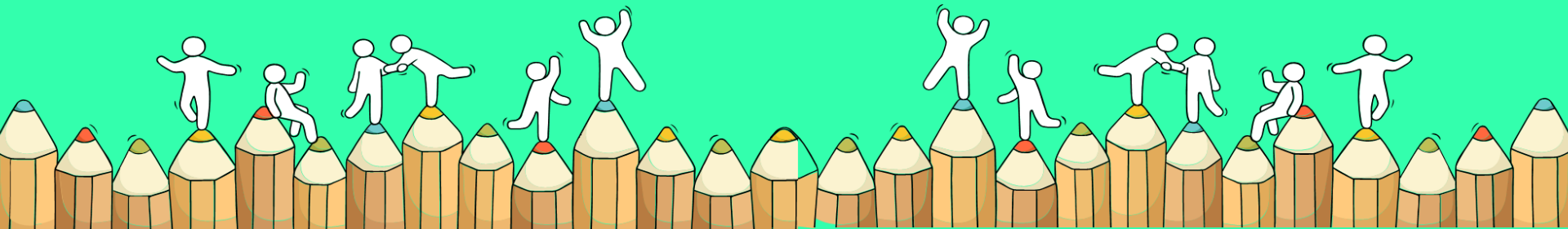


Mr Eugene Ang

**Senior
Education and
Career Coach**



**Mdm Leong
HOD/CCE**



Instructions to 4N(A) students



<https://forms.moe.edu.sg/forms/vy00AP>

- 4N(A) students will need to complete the online form to indicate their progression pathways by **19 Dec, Thu, 5 pm.**
- 4N(A) students have to log in using their student icon email address and their password has been reset to **P@ssword2024.**

Thank You!

Relevant Slides will be uploaded into school's website
and shared with students via Whatapps

