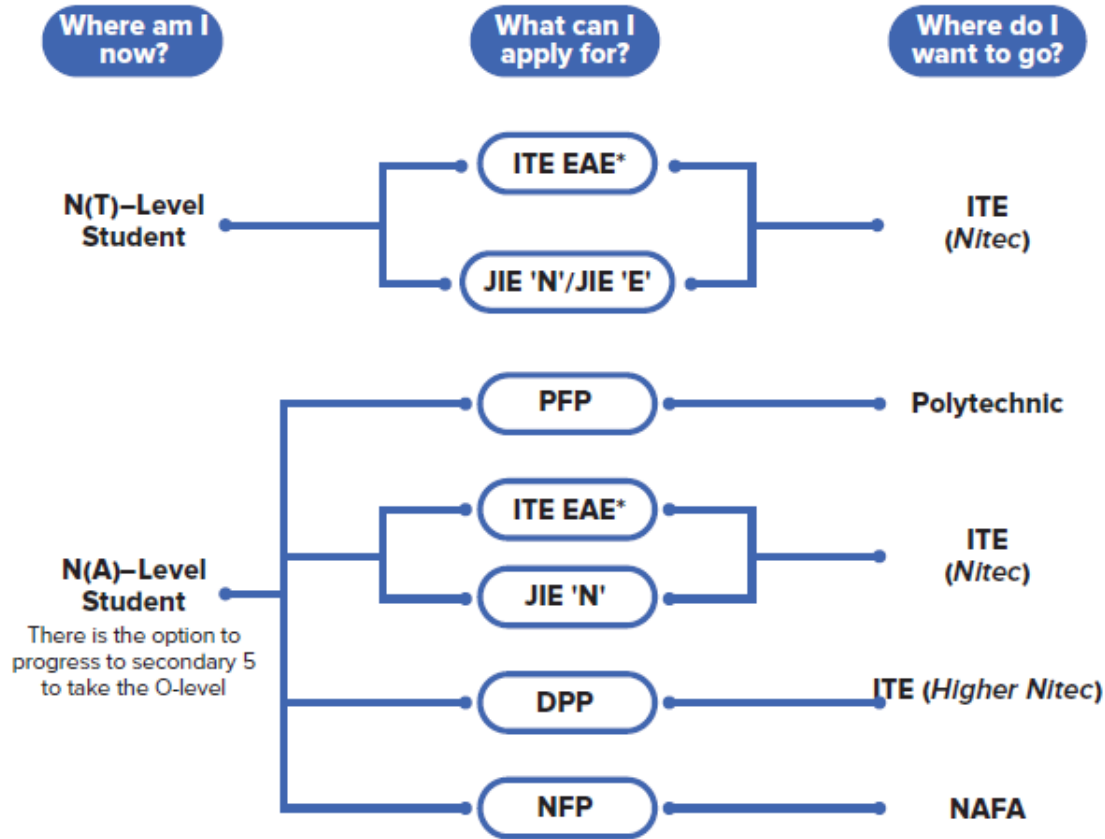


# RELEASE OF GCE 'N' LEVEL RESULTS 17 DEC 2021

JANUARY 2021  
JOINT INTAKE EXERCISE (JIE)

# JOINT INTAKE EXERCISE (JIE)

## Admissions Exercises for Normal Technical (N(T)) / Normal Academic (N(A)) Students



OFFICIAL (CLOSED) \ NON-SENSITIVE

# JOINT INTAKE EXERCISE (JIE)

# 2022

INTAKE EXERCISE

*For January 2022 Intake*

**Admission Booklet**

For Full-Time and  
Traineeship Courses



**Institute of Technical Education**  
Internet Address: [www.ite.edu.sg](http://www.ite.edu.sg)

---

Our Quality, Their Future ...



# JOINT INTAKE EXERCISE (JIE)

## Joint Intake Exercise 'N' (JIE 'N') for the **2-year Nitec Courses**

The JIE 'N' is conducted to enable GCE 'N' (Technical) / GCE 'N' (Academic) / GCE 'O' Level holders to apply for the **2-year National ITE Certificate (Nitec)** courses conducted by Institute of Technical Education (ITE).

GCE 'N' Technical/ GCE 'N' (Academic) /GCE 'O' Level holders can choose to take up course under **Full-Time Education** or **Traineeship**.



# JOINT INTAKE EXERCISE (JIE)

## Joint Intake Exercise 'H' (JIE 'H') for Higher Nitec Courses under Direct Entry Scheme to Polytechnic Programme (DPP)

The JIE 'H' is conducted to enable GCE 'N' (Academic) holders with the **relevant pre-requisites** to apply for the Higher National ITE Certificate (*Higher Nitec*) courses conducted by ITE under Direct Entry Scheme to Polytechnic Programme (DPP).

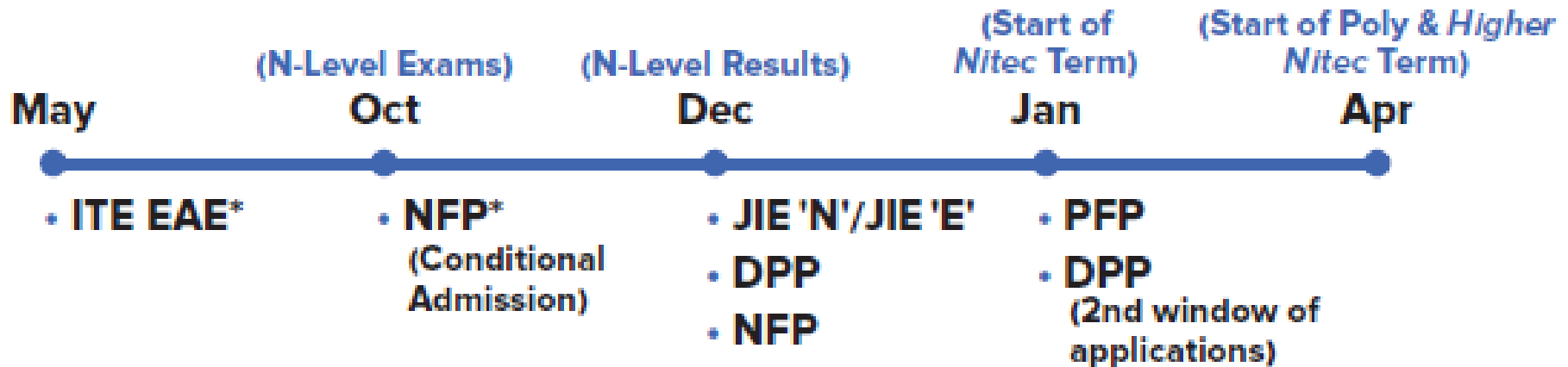
Eligible GCE 'N' (Academic) Level holders may apply for Higher Nitec courses under both the JIE 'H' and Nitec courses under the JIE 'N' intake exercises. However, you are offered a *Higher Nitec* course under the JIE 'H', you will not be offered a *Nitec* course under the JIE 'N'.



# JOINT INTAKE EXERCISE (JIE)

## Admission Exercises Applications Timeline

When can I apply?



\*Students can apply through these admissions exercises before their examinations.



# JOINT INTAKE EXERCISE (JIE)

All applications for courses must be submitted online through the ITE website at

- <https://www.ite.edu.sg>



# JOINT INTAKE EXERCISE (JIE)

The JIE registration will be held over a period of **5** calendar days, starting from **2.30pm on 17 Dec 2021 to 5pm on 21 Dec 2021.**





# JOINT INTAKE EXERCISE (JIE)

If you encounter difficulties with your application over internet, please go to any of the Customer & Visitor Centre of ITE Colleges on pg 133 of the JIE Admission Booklet to apply or call the ITE Customer Service Hotline on 1800 2222 111 for assistance.



# JOINT INTAKE EXERCISE (JIE)

## Making ITE Enrolment Easier for our N(A) and N(T) School Leavers

- Students who qualify for ITE (to be collected with the results slips) will receive
  - 1 copy of Form N (used for JIE)
  - 1 copy of ITE's Admission Booklet with scholarship brochure inserted
  - 1 copy of ITE's Traineeship brochure



# JUST-IN-TIME INFORMATION on JIE APPLICATION (Jan 2022 intake) For N(A)\* and N(T) School Leavers

\*Applicable for N(A) students not eligible for progression to 5N(A) and/or not seeking retention at 4N(A)

Briefing Slides for Students

A PRESENTATION BY  
MINISTRY OF EDUCATION, SINGAPORE



# Information for Students

Refer to slides for:

- key dates for intake activities
- JIE application process
- follow-up support by schools and MOE HQ
- additional information for making an informed decision on which course to apply for in ITE

Schools should factor how students who were not present on the day of release of N-level results can also access the information on JIE application, resources and support.



## Key Dates for Jan 2022 Intake Exercise (Full-time *Nitec* Courses)

Key Activity	Period for 2-Year and 3-Year <i>Nitec</i> Courses, and 3-Year <i>Higher Nitec</i> courses	Remarks
<b>1st Phase (Main Phase)</b>		
Application	17 Dec 2021 (2.30pm) to 21 Dec 2021 (5pm)	Apply through the Internet at <a href="https://www.ite.edu.sg">https://www.ite.edu.sg</a> with NRIC / FIN and Date of Birth. You may also apply using SingPass.
Release of Results	30 Dec 2021 at 9am	Check results at <a href="https://istudent.ite.edu.sg">https://istudent.ite.edu.sg</a> with web ID and password
Acceptance of Course Offer Period	30 Dec 2021 to 4 Jan 2022	Accept course offer at <a href="https://istudent.ite.edu.sg">https://istudent.ite.edu.sg</a> with web ID and password
<b>2nd Phase (Late Application/Appeal Phase)</b>		
Application	30 Dec 2021 to 4 Jan 2022	Apply through the Internet at <a href="https://istudent.ite.edu.sg">https://istudent.ite.edu.sg</a> with NRIC / FIN and Date of Birth. You may also apply using SingPass.
Release of Results	11 Jan 2022 at 9am	Check results at <a href="https://istudent.ite.edu.sg">https://istudent.ite.edu.sg</a> with web ID and password
Acceptance of Course Offer Period	11 Jan 2022 to 13 Jan 2022	Accept course offer at <a href="https://istudent.ite.edu.sg">https://istudent.ite.edu.sg</a> with web ID and password
<b>3rd Phase (Final Top-up Phase)</b>		
Application	1 <sup>st</sup> Top-up Phase Application - 11 Jan to 20 Jan 2022 2 <sup>nd</sup> Top-up Phase Application - 26 Jan to 8 Feb 2022	Apply through the Internet at <a href="https://istudent.ite.edu.sg">https://istudent.ite.edu.sg</a> with NRIC / FIN and Date of Birth. You may also apply using SingPass.
Release of Results	1 <sup>st</sup> Top-up Phase - 14 Jan to 26 Jan 2022 2 <sup>nd</sup> Top-up Phase - 26 Jan to 15 Feb 2022	Check results at <a href="https://istudent.ite.edu.sg">https://istudent.ite.edu.sg</a> with web ID and password
Acceptance of Course Offer Period	1 <sup>st</sup> Top-up Phase - 14 Jan to 26 Jan 2022 2 <sup>nd</sup> Top-up Phase - 26 Jan to 15 Feb 2022	Accept course offer at <a href="https://istudent.ite.edu.sg">https://istudent.ite.edu.sg</a> with web ID and password
Jan 2022 Intake Term Commencement Date: <u>10 Jan 2022</u>		



JUST-IN-TIME INFORMATION ON JIE APPLICATION (JAN 2022 INTAKE)

# Information For Students on Key Dates for Jan 2022 intake

1. All N(A)\*/N(T) school leavers are encouraged to put in an application during the **1<sup>st</sup> Phase (Main Phase)** between **17 Dec 2021 (2.30pm) to 21 Dec 2021 (5pm)**. Application results for the 1<sup>st</sup> Phase will be released on **30 Dec 2021 at 9am**.
2. If you wish to appeal, please accept the course offered **before** applying in the 2<sup>nd</sup> Phase (Late Application/Appeal Phase) between **30 Dec 2021 to 4 Jan 2022**. The application results for the 2<sup>nd</sup> Phase will be known on **11 Jan 2022 at 9am**.
3. Unsuccessful applicants can appeal under the **3<sup>rd</sup> Phase (Final Top-up Phase)** between **11 Jan to 20 Jan 2022 and 26 Jan to 8 Feb 2022** for courses with vacancies. The application results for the 3<sup>rd</sup> Phase will be known between **14 Jan to 26 Jan 2022** and **26 Jan to 15 Feb 2022**.

\*N(A) school leavers who are not eligible to progress/repeat in MOE schools.

For further enquiries, N-Level school leavers can contact  
ITE Hotline: 1800-2222-111

4



# JOINT INTAKE EXERCISE (JIE)

## Summary (Application to ITE)

- Main Phase ends on **21 Dec 2021**
- Late applications will still be accepted by ITE via two additional phases
  - Appeal Phase/Late Application  
**30 Dec 2021 to 4 Jan 2022**
  - Final Top-Up Phase
    - 1<sup>st</sup> Top-up Phrase Application  
**11 Jan to 20 Jan 2022**
    - 2<sup>nd</sup> Top-up Phrase Application  
**26 Jan to 8 Feb 2022**



# Key Pointers for Students on ITE's Joint Intake Exercise (JIE) for Admission to Nitec Courses

ALL N(T) students and N(A) students (who are not progressing to 5N(A) or repeating 4N(A)) are eligible for JIE.

Keen competition for Nitec and Higher Nitec courses, so use all 12 choices wisely!

Participation in Main Phase is key to secure a place in ITE!

If you are keen in the work & learn option, you may consider applying for the ITE Traineeship programme. Do apply in the Main Phase to avoid missing a place in ITE!

If you are unsuccessful in EAE, make sure you apply in Main Phase to avoid missing a place!

If you have received an additional letter, then you are eligible for the 3-year Nitec Programme (eNFP).

If you are eligible for eNFP, make sure you apply for the 2-year Nitec first before applying for eNFP!

The eNFP helps to build the necessary literacy and numeracy foundations that will enable you to successfully complete your Nitec course!

If you are counter-offered a course, accept it first before appealing to another course you may be more interested in!








## STEP-BY-STEP INFORMATION FOR JIE APPLICATION

## Online Application for

2-Year *Nitec* and 3-Year  
*Higher Nitec* Courses

3-Year *Nitec* Course with eNFP  
(for N(T) courses with 0, 1 pass)

1. Go to <a href="https://www.ite.edu.sg">https://www.ite.edu.sg</a> .	
2. Click  icon.	
3. Under JIE 'N', click  icon to link to the application website	Under JIE 'E', click  icon to link to the application website
4. At the application website: <ol style="list-style-type: none"> <li>Enter NRIC / FIN and Date of Birth to start application.</li> <li>Upon completion of application, applicants will receive their <b>web ID</b> and password.</li> </ol>	

\*Students who are eligible for the 3-Year *Nitec* Course with eNFP are encouraged to go through **both** JIE 'E' and JIE 'N' e-application process



## Checking of Posting Results/Accept Course Offer

2-Year *Nitec* and 3-Year  
*Higher Nitec* Courses

3-Year *Nitec* Course with eNFP  
(for N(T) courses with 0, 1 pass)

1. Go to <https://istudent.ite.edu.sg>.
2. Enter **web ID** and password.
3. Click '**Self-Service**' followed by '**Student Admission**' followed by '**View Application Results**' to view the application results and to accept course offer.

The above steps applies to all phases (refer to [Slide 9](#) for dates).  
For more details, please refer to ITE Admission Booklet.



## Please Note the Following:

1. Students who
  - **did not apply** during the 1<sup>st</sup> Phase (Main Phase) may be contacted by your teachers to understand your reasons and, where necessary, assist you to complete the ITE application online in the Appeal and Top-Up Phases.
  - applied in the 1<sup>st</sup> Phase (Main Phase) and were **counter-offered courses** may also be contacted by your teachers to advise/remind you to accept the counter-offer before submitting an appeal.
2. Students who are not enrolled in any course in secondary school or Post-Secondary Education Institutions (i.e. Poly/ITE/NAFA/LaSalle) by May 2022 may be contacted by MOE for further support and guidance.

For further enquiries, N-Level school leavers can contact  
ITE Hotline: 1800-2222-111



## RESOURCES FOR STUDENTS

## Additional Information For Students

The information listed in the table below will help you to make an informed decision on which choice of courses you could consider applying at ITE.

S/N	Information	Attachment/Link
1	ITE Factsheet 2021	 ITE Factsheet 2021
2	ITE Course Booklet 2022	<a href="https://www.ite.edu.sg/docs/default-source/full-time-courses-doc/ite-course-booklet-2022">https://www.ite.edu.sg/docs/default-source/full-time-courses-doc/ite-course-booklet-2022</a>
3	ITE Traineeship Course Booklet 2022	<a href="https://www.ite.edu.sg/docs/default-source/traineeship/ite-traineeship-e-booklet_2022.pdf">https://www.ite.edu.sg/docs/default-source/traineeship/ite-traineeship-e-booklet_2022.pdf</a>
4	Information on Progression Opportunities (From <i>Nitec</i> Courses to <i>Higher Nitec</i> and Technical Diploma Courses)	<a href="https://www.ite.edu.sg/admissions/full-time-courses/nitec/progression-opportunities">https://www.ite.edu.sg/admissions/full-time-courses/nitec/progression-opportunities</a>
5	Information on Graduate Employment Survey	<a href="https://www.ite.edu.sg/admissions/graduate-employment-survey">https://www.ite.edu.sg/admissions/graduate-employment-survey</a>



# Progression Pathways for Secondary Four Normal (Academic) Students

- Polytechnic Foundation Programmes (**PFP**)
- Direct-Entry-Scheme to Polytechnic Programme (**DPP**)

# Polytechnic Foundation Programmes (PFP)

Applications for the PFP will be open on the day of 2021 O-Level results release.

Eligible students who wish to apply for PFP should first progress to Sec 5 on Monday, 4 Jan 2022 and withdraw from Sec 5 at the end of Jan 2022 if the PFP application is successful.

# Direct-Entry-Scheme to Polytechnic Programme (DPP)

Applications for the DPP will be from 17 Dec, 2.30pm to 21 Dec, 5.30pm.

2022 Sec 5NA students who are newly eligible after taking into account their O-Level examination results can also apply DPP under its final application phrase in Jan.

More information on the admission procedures can be found in the January 2021 ITE Admission Booklet.

# APPEAL FOR REVIEW OF RESULTS

The fee for an appeal to review the result of any subject is \$112.35 per subject (inclusive of 7% GST)

Students who do not have strong grounds should be discouraged from submitting an appeal

Deadline : **23 Dec, 12.30pm**



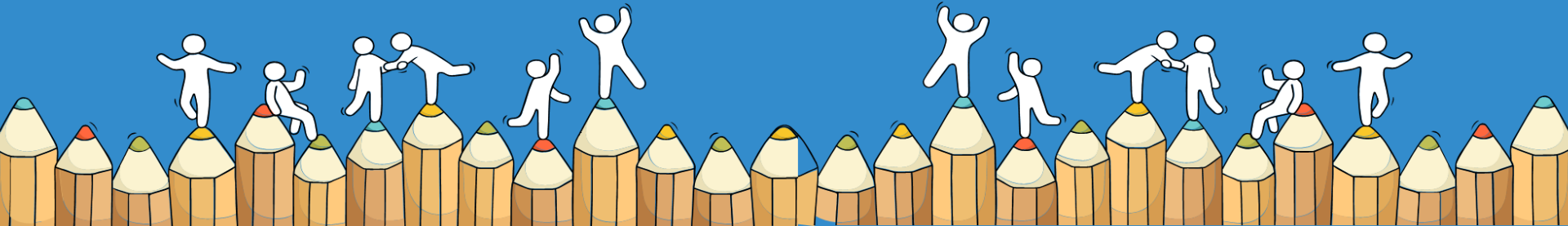
## **CERTIFICATE AMENDMENT REQUEST**

Candidates may request for a re-print of their certificate only if their name were printed wrongly due to misspelling.

There will be an amendment fee of \$50 for each certificate that requires a re-print.

Request to be submitted by **30 Mar 2022**

# Sources of ECG Support



# Speak to an ECG Counsellor

- Making informed decisions is important for successful transition from school to further education.
- Speak with your teachers and ECG Counsellor in school, besides your parents, on the possible pathways.
- MOE ECG Centre offers online or phone counselling services to GCE N-Level students from 13 – 24 December 2021 (Weekdays: 9.00 am to 5.00 pm; 18 December, Saturday & 24 December, Friday: 9.00 am to 12.30 pm).
- Details on how to make an appointment can be found in the What's Next pamphlet distributed to you.

Make an online or phone counselling appointment with the ECG Centre @ MOE (Grange Road) through

<https://go.gov.sg/moe-ecg-centre>.



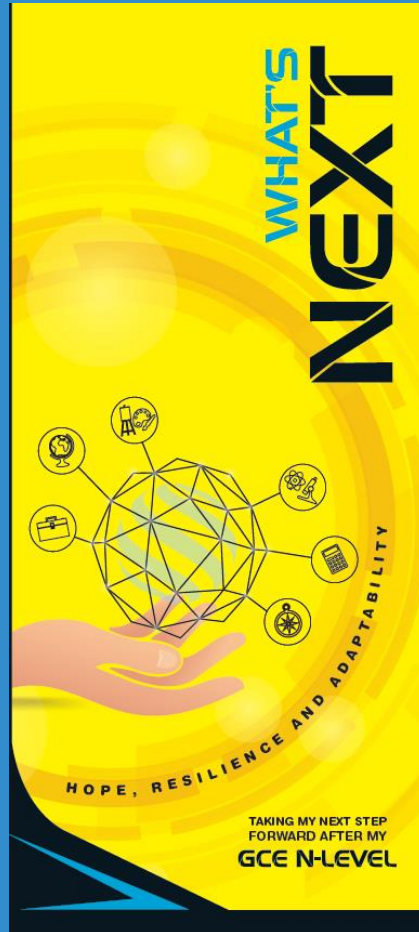
# MySkillsFuture Student Portal (Secondary)

Visit <https://go.gov.sg/MySFSec> for more information on post-GCE N-Level options

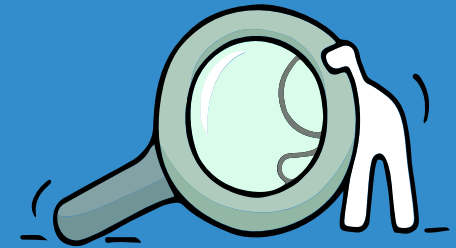
The screenshot shows the MySkillsFuture Student Portal (Secondary) website. At the top, it says "A Singapore Government Agency Website". The navigation menu includes "About", "Know Yourself", "World of Work", "Education Guide", "Help", "Feedback", "Login", and a search icon. The main header features the "MySkillsFuture" logo. Below the navigation is a large banner image of students and a teacher working together. The banner text reads: "About MySkillsFuture" with a play button icon, followed by "A one-stop portal that empowers you to embark on a journey of self-discovery and make informed education and career choices. Use the information and tools to explore various education and career pathways, and take charge of your future." To the right of the banner is a "What's new" section with buttons for "Events" and "Useful links", and a list of programs: MOE Website, Student Learning Space, Early Admission Exercise, Poly Foundation Programme, NAFA Foundation Programme, SP-CCA Athletics, SP-CCA (Ethnic Dance), Art Elective Programme (AEP), Enhanced Art Programme (EAP), Music Elective Programme (MEP), Enhanced Music Programme (EMP), Applied Learning Programme (ALP), and Learning for Life Programme (LLP). Below the banner is a section titled "Find out more about yourself" with the text: "Everyone has a set of unique attributes. The more you know about what you value, what you are interested in, and what you are good at, the more likely you will be able to make good choices in your education and career explorations." and a "Discover Now" button. There are also decorative icons of a person, musical notes, and a calculator.



# What's Next – A Quick Guide



<https://go.gov.sg/whats-next-nlevel>




# On My Way (OMW)



You can find articles, videos on different professions, and connect with tertiary seniors and young professionals through sharing sessions with National Youth Council's On My Way (OMW) website.

**KNOW IT ALL** COPY URL TO SHARE



### INVESTMENT BANKER

Investment Bankers sell securities and provide strategic advice to their clients. They advise clients on raising funds from the equity/debt capital markets and merger and acquisitions (M&A).

**ADVISE** corporate clients on product offerings, private equity transactions, mergers and acquisitions, and valuations.

Determine the **best strategy** and place to **raise debt or equity capital**.

Prepare necessary documents to **protect the company and investor**.

Ensure all **government regulations have been adhered to**.

Perform financial modelling using valuation methods.

**RESPONSIBILITIES**


**SKILLS NEEDED**

HARD SKILLS	SOFT SKILLS
<ul style="list-style-type: none"><li>Financial Modelling (e.g. DCF, Public Comps, M&amp;A Comps)</li><li>Data Analytics</li><li>Strong Mathematical and Numerical Skills</li></ul>	<ul style="list-style-type: none"><li>Influencing and negotiation skills</li><li>Innovative Problem Solving</li><li>Customer Orientation</li><li>Communication</li></ul>

**DAY IN THE LIFE**

Explore our library of over 60 videos to get an intimate look into the daily lives of different professionals. Looking for a specific job? Use the category filter below to help you navigate the videos!


**BROWSE ALL** Filter By Category:



#### A Day in the Life of a Civil Engineer

Ever wondered what engineers do other than math? Join Yu Rou as she brings us into the world of a Civil Engineer!


By National Youth Council  
#Engineering #CivilEngineer



#### A Day in the Life of a Game Developer

What really goes on behind the scenes of games development? Learn more about what a Game Developer does!


By National Youth Council  
#ComputerScience #GamesDeveloper



#### A Day in the Life of a Public Relations Manager

Writing about hot topics isn't what Samantha does all the time. Let's see what she has to highlight to us!

By National Youth Council  
#Communications #NewsMedia #PublicRelationsOfficer



#### A Day in the Life of a Social Media Strategist

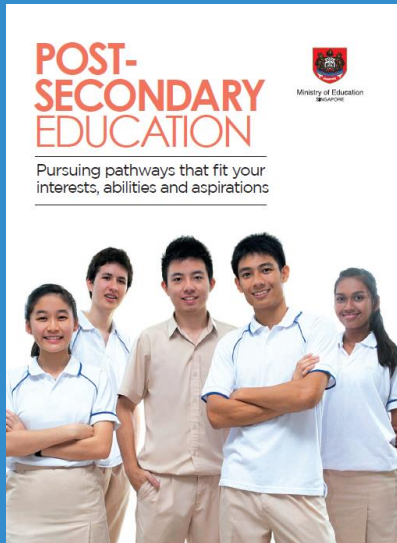
Social media all day every day? Find out what it's like to be a Social Media Strategist!

By National Youth Council  
#Communications #NewsMedia #SocialMediaStrategist



<https://go.gov.sg/omw2022>

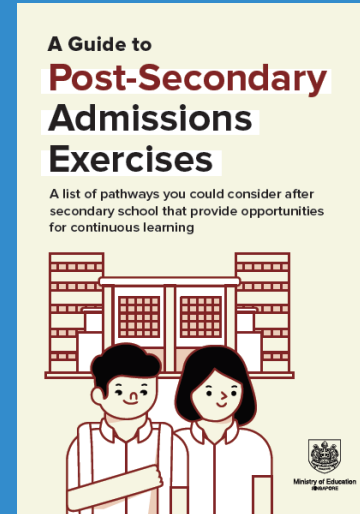
# Post- Secondary Education



## Post-Secondary Education booklet

Learn more about the post-secondary landscape at

<https://moe.gov.sg/post-secondary/overview>



## Post-Secondary Admissions Exercises booklet

A list of pathways you could consider after secondary school

<https://moe.gov.sg/post-secondary/admissions>







# Education and Career Guidance (ECG) Support for 'N' Level Students

Our ECG Counsellor, Ms Teoh, will provide:

- Zoom consultation on
  - 20 Dec 2021 (Mon), 1.30pm to 5pm
  - 21 Dec 2021 (Tue), 9am to 5pm



Students and parents may make an appointment at:

<https://calendly.com/msteoh/gess>

Or scan the QR Code



Please have this ready during the session

- 2022 JIE Booklet
- Result Slip & Form N
- Prelim Result Slip if you are taking O Level Subject(s)





# Education and Career Guidance (ECG) Support for 'N' Level Students

**To complement the ECG services provided by schools, students and parents may also wish to consult an ECG Counsellor at the MOE ECG Centre. The MOE ECG Centre offers online or phone counselling services to GCE N-Level students from:**

Date : 13 – 24 December 2021

***(Weekdays: 9.00 am to 5.00 pm; 18 December, Saturday & 24 December, Friday: 9.00 am to 12.30 pm).***

Email : MOE\_ECG@moe.gov.sg

Phone : 6831 1420

To make an online or phone counselling appointment, visit

<https://go.gov.sg/moe-ecg-centre>

# VIEW RESULTS ONLINE

- In addition, all students will be able to view their results online via **Singapore Examinations and Assessment Board's (SEAB)** results release system at [www.seab.gov.sg](http://www.seab.gov.sg) from **3.15pm on 17 December 2021**. The system will be accessible from **17 to 31 December 2021**.
- Students who are eligible for SingPass should **login to the results release system via their SingPass**. School candidates who are International Students **will receive their system-generated username via email from 14 December 2021**.
- The guide to access the SEAB result release system can be found on SEAB website.



# Thank You!

Relevant Slides will be uploaded into school's website  
and shared with students via Whatapps

